

4-H DOG PROJECT HANDBOOK



Table of Contents

General Information	3
Canine Safety Reminders	3
Parent/ Guardian Requirements	4
Member Requirements and Guidelines	4
Qualifications for Exhibiting	6
Canine Health	7
General Information	7
Heath Forms	7
Vaccines	8
Internal and External Parasites	10
General Health	10
Signs of Illness	10
Class Guidelines	11
General Guidelines	11
Agility Guidelines	12
Showmanship Guidelines	13
Showmanship Patterns	17
Skeletal Drawing of a dog	18
Anatomy of a Dog	19
Team Obedience Guidelines	20
Brace Obedience Guidelines	20
Rally Obedience Guidelines	21
Dog Quiz Bowl Guidelines	22
Dog Project Committee Guidelines	22
Purpose and Function of 4-H Dog Project Committee	22
Dog Project Committee	22
Committee Guidelines	22
Elections	23
Sub-Committees	23
4-H Dog Project Adult Leaders	24
Position Qualifications	24
Duties and Responsibilities	24
4-H Dog Project Youth Leaders	24
Position Qualifications	24
Duties and Responsibilities	24
Sheboygan County 4-H Dog Project Scholarship	25
Earned Absent Day Form	29
Service Project form	30
Sheboygan County 4-H Dog Project Incident Report	31
Judging and Awards	32
Department 9 - Dogs	32
Awards	33
Classes and Scoring	34
Times and Locations	36
Calendar	37
Committee Members	40

GENERAL INFORMATION

Call the UW-Extension Meeting Cancellation Line at 920-459-5908 or check website www.sheboygan.uwex.edu to check for weather cancellations. Announcements may also be posted on Facebook.

On very hot days, use your own discretion. Members can attend and have the option of leaving their dog at home. If training falls on a hot day, make sure to bring a pan for water and a water sprayer.

Join us on Facebook at Sheboygan County Dog Project.

For all show wins outside of our County Show and the State Dog Shows, contact a board member to receive recognition in the CLOVERLEAF CRIER.

Visit the UWEX Sheboygan County 4-H Dog Project website at (<http://sheboygan.uwex.edu/4-h-youth-development/4-h-projects/sheboygan-county-dog-project/>).

CANINE SAFETY REMINDERS

REMEMBER --- FOR YOUR SAFETY --- NEVER APPROACH A STRANGE DOG!!!

When a strange dog comes to you:

Remain calm - stand motionless - try not to show fear. Speak quietly to the dog. "Good dog, go home" -- letting the dog know you intend no harm.

Protect yourself if a dog should attack:

Cover your face and neck with your arms. If you are knocked down, roll onto your stomach and remain quiet.

If you are bitten by a dog:

Tell your parents right away so that the wounds can be washed with soap and water and your doctor contacted.

Dogs that are fenced, chained, on leash or harnessed:

Never approach without the owner's permission. Teasing, threatening or throwing things at confined dogs will anger them. Remember: fences can be jumped; chains, ropes and leashes may break.

A dog leading a blind person should never be approached, even for praise.

Any distraction may cause the dog to make a mistake with possible harm to his master.

Dogs you know, including your own dog:

Offer the back of your hand for the dog to sniff. Keep your movements slow and gentle. Do not let playing with a dog result in teasing the dog. Dogs love to play but resent teasing and may harm you in self-defense. It is dangerous to approach a sleeping dog, to take food from a dog that is eating, or interfere with a mother dog caring for her puppies.

PARENT/ GUARDIAN REQUIREMENTS

Parents are expected to pick members up promptly after training. We will assume **no** responsibility after 8:15 p.m.

Parents and friends of participants are encouraged to watch, providing there is no interference or disruptions on the member or dog's part. **Please do not bring any animals that are not participating in the dog project unless pre approved by the Dog Board.**

ALL DOG PROJECT FAMILIES are required to assist with one of our events during the year, which might include the Fun Match, County Shows or fundraisers. This entails at least a 2-hour commitment including a sign off approved by a dog board member. Failure to work at least one of these activities will result in the enrolled dog project member not being allowed to show at the County and/or State shows.

MEMBER REQUIREMENTS AND GUIDELINES

Dogs must be on leash at all times unless under direction of an advanced instructor.

If your dog tends to be sharp or snappy, please inform your instructor of this so he or she can be ready to help you and can protect your dog and the other members of your class.

Children under 12 cannot train/show a dog 40 lbs or more, or intact male dog of any size, without 2 trainers' approval. New dog/child combinations will be evaluated the first night of training. Leaders will determine if child will be able to Control dog during class. If the dog is too powerful for the child to control, an alternate dog will be provided for training.

Good sportsmanship is expected at all 4-H Dog Project events. Instructors will not tolerate class disruptions from youths, or anyone else. Bullying, disruptions or unsportsmanlike behavior by members or parents could cause temporary or permanent dismissal of the 4-H dog project member. The Code of Ethics will be enforced. Report your concerns to an adult dog board member immediately (same day).

Members are required to attend 10 training sessions for each discipline in which they participate in order to show at the County Fair. To receive credit for the class, the member must be an active participant for at least 30 minutes of the appropriate session. Members may use an AKC Show or Fun Match towards a required training session, providing the member shows in the same class or classes enrolled in 4-H. Proof of exhibiting at an AKC approved Show or Fun Match will be the score sheet or the arm band with signature of ring steward or show secretary affixed to it. There will be up to 2 private make-up sessions allowed. In the event of discrepancy, the trainer's attendance record will prevail.

For each year completed in the project, the member receives an earned absent day. This can be taken in place of a required training session. Example: If this is your second year showing obedience, then you are required to attend 9 training sessions in obedience. For each earned absent day used, the member must submit to the trainer what training they did that week to make up for the missed day of group training. After using 3 earned absent days, the member must also complete one service project assigned by the board. Example: Help cleaning the storage trailer; create a poster for the project; work at an event. These service projects are not in place of the required family volunteer activity.

Beginners are encouraged to attend **all classes**, and are strongly recommended to attend the first 7 in succession. Wear flat shoes that are easy to walk in. **No sandals or open-back shoes (cros) are permitted.** Do not wear dresses, mini-skirts, swimsuits or halter tops. 4-H members who wear inappropriate apparel will not be allowed to train that night.

Wear suitable clothing for the weather. We train rain or shine - bring a rain jacket if necessary. If your hands get cold bring gloves.

Each week you will be taught a new exercise. You should practice the exercise each day for 10-15 minutes. Do not skip a day and train the following day for 30 minutes. Do the exercise **exactly** as taught. Obedience is learned by repetition and if you don't practice, your dog cannot be expected to learn.

No wolf hybrids are allowed in the 4-H Dog Project.

All 4-H youth enrolled in the Dog Project with a dog having been trained or shown by another person will be placed in the class level decided on by County 4-H Dog Board with recommendation from the trainer. This includes dogs with or without AKC Championship points, agility training or degrees and/or obedience legs. (Exhibition - only class may be a possibility for extremely advanced obedience, showmanship, or agility dogs at county level.)

Members may work with up to four dogs: one for Showmanship, one for Obedience and additional ones for Agility, Team, Brace or Rally competition. However, each dog must go through the appropriate training and be registered for the training. Dogs will be allowed to exhibit only in the classes for which they are pre-registered, and are to be exhibited by only the 4-H member who trained the dog. Dogs may be exhibited only once in each class, by one handler. Switching dogs after entry deadlines for State 4-H Dog Show or the Sheboygan County Fair Show will not be allowed, except in the following situations:

- Bitch comes into season.
- Death or injury of dog.

Member should submit a veterinarian statement and explanation of the situation in writing to the Dog Board for review.

If a dog is determined to be aggressive or unsafe by the trainer, the following steps will be taken:

- Trainer will file an incident report for any altercation.
- Board will take the incident report and other related information into consideration in determining correct action depending on the situation.
- Actions can range from a change in training guidelines to muzzling the dog, and the dog will be on probationary status.
- Board member will notify parent/member of board's decision on corrective action.
- Parent will have the option to appeal trainer's recommendation to Dog Board, unless dog is already on a probationary status. If dog is on probation the rules of probation will be followed.

Probationary status- during a probationary status if the dog shows signs of aggression to another dog or person including but not limited to nipping, biting, growling, lunging, viewed by any trainer, leader or member of the dog project, the following will occur:

- An incident report will be filled out by the person observing the situation and the 4-H member owning the dog, and turned into the Dog Board. The Extension office will be notified.
- The board will be called to review the case within 5 days from the incident.
- If the incident report is validated by the board, the dog will be immediately expelled from all 4-H dog project activities permanently, with no appeal.

The Dog Board will have a small equipment inventory available for sale at training sessions if needed. No equipment will be loaned out. **Proper equipment is required for training sessions (approved by trainer) and for show.**

- **Obedience Equipment:** each dog must be equipped with a metal or nylon slip collar with no attachments, (this means no name tags, rabies tags, or license), and a **leather** leash at least six (6) feet in length with only a metal snap attached. Martingale collars are allowed.

- **Showmanship Equipment:** Consult with your trainer or the equipment manager to get the proper equipment.
- **Agility Equipment:** no choke, harness or pinch collars. Flat buckle collars only. No tags allowed on collars.
 - 4" – 6" tab leash (optional)
 - 6' obedience leash
- **Rally Equipment:** Buckle collar with no tags and a 6' leash.
- **Brace Equipment:** Buckle collar with no tags on each dog. Couplers may not be shorter than 6". 6' obedience leash.

Pinch collars will be used for training only with permission of dog board and/or instructor. Pinch collars, halters, halties, gentle leaders, etc. are not allowed in the show ring.

Each member is responsible for keeping the training grounds clean and orderly. Plastic bags and paper towels are available at training sessions for cleanup. Each 4-H handler is responsible for cleaning up after his or her own dog. Failing to clean up after your dog may result in losing our training grounds.

Care of your dog should be **your** responsibility; feeding, watering, grooming, training, playing and most importantly – loving. It's a good idea to go along to the vet and to earn your own money to help with his care.

Each member may want to have on hand a dog first-aid kit. Supplies may include: gauze bandages, antibiotic ointment, Pepto Bismol tablets, Benadryl capsules (25 mg for allergies), Hydrogen Peroxide.

Any complaints concerning Training Sessions or the Dog Project guidelines shall be directed to the County 4-H Dog Board in writing.

SCHOLARSHIP

A Dog Project Scholarship may be awarded to a high school 4-H member if funds are available. Funds, up to \$600, will be distributed at the board's discretion. Application and instructions are found on handbook page 25.

QUALIFICATIONS FOR EXHIBITING

Members exhibiting at either the County Fair Shows or the State Dog Show must meet county dog project guidelines.

- Be enrolled in the Dog Project
- All required Dog Project Paperwork must be submitted.
- Training fees are paid in full.
- The dog must be trained by the 4-H member enrolled in the Dog Project.
- Meet attendance requirements.
- Must be in good standing with local 4-H club or Extension office for SPIN members.
- Late entries will not be accepted by the person who is taking entries for the State 4-H Dog Show.

In the event of discrepancies, trainer's records will prevail.

For the County Fair Shows, we will allow outside county kids who have trained with us all summer to show at the Sheboygan County Fair Shows if they submit an entry to the Dog Project Board by the Sheboygan County Fair entry deadline. They will be treated as Sheboygan County entrants but will not receive a premium payment. Any exhibitor who misses the Fair entry deadline can show "Exhibition Only" and will receive the placing ribbon but cannot receive top

blue or the class trophy or any top honors associated with that class. The missed deadline exhibitor showing "Exhibition Only" cannot qualify, cannot move up in training class and will not receive a premium.

The dog is to be shown in the class for which it received training in that particular year. A dog that has received a qualifying score at the county level Dog Show, and/or State Dog Show must advance to the next higher class the following year. If you do not get a qualifying score, you do not advance. **Exception:** Pre Novice "A" youth may advance to Novice due to a qualifying score only on recommendation of the instructor. Any exceptions must be approved by the dog board. **Note:** Members must register only for the level they have qualified for—they may not skip levels. If there are questions on class placement, the decision of the board is final.

A dog that has received his CD by June 1st of this year must compete in the Grad-Novice Class at the State and County.

Open Class - dogs will be permitted to compete two (2) years at a State and County, but cannot have their CDX, and any dog that has received his CDX by June 1st must compete in the Pre-Utility Class, even though they have trained in the previous class this year.

Pre-Utility - dogs may have two legs toward UD.

Utility Class - dogs in Utility Class will be permitted to compete in Utility Class until three qualifying scores have been attained or an AKC degree has been reached.

All members receiving "top" blue at County Fair will advance to "Open" Showmanship the following year, as divided by age at the discretion of Board members. The only exception is a class consisting of one participant. In this case, the 4-H'er will have a choice to move up or stay in the same class. Once the choice of class has been made, there will be no further change. Showmanship is open to any dog, AKC titled or not, as handler is being judged and not the dog.

Canine Health

GENERAL INFORMATION

Dogs must be born prior to 12/31 of the previous year to participate in the current year of training sessions.

Bitches in season will not be allowed on the training grounds. The 4-H **member should come without** the dog. The 4-H member will still receive credit for the training session if they attend training even without the dog.

DO NOT BRING DOGS with fleas, ticks, intestinal parasites, kennel cough etc. Advise your trainer of the condition and see your vet as soon as possible.

HEALTH FORMS

A color, full side view photo of each dog in the project with description **must be included** with enrollment form with child's and dog's name on back. The vet forms will not be accepted without photo.

ALL dogs to be exhibited and/or trained must have the following vaccinations with dates vaccinated listed on the official Health Form signed by your veterinarian. They must be certified by a member of the Dog Board before the start of training. Please see Dog Health form for more details.

- ✓ DHPPL4 (Leptospirosis can be waived with veterinarian approval)

- ✓ **Rabies – Provide copy of Rabies Certificate.** The 4-H member will **lose an attendance credit for each week** the rabies certificate is not turned in.
- ✓ A negative fecal within 30 days of training
- ✓ Bordetella—optional but recommended
- ✓ Heartworm—optional but recommended
- ✓ 4DX test which tests for Lyme disease, Anaplasmosis, Ehrlichiosis (tick-borne diseases) and Heartworm disease -- optional but recommended

VACCINES

In order to insure the health of all animals in our care during classes, age – appropriate vaccinations are required. Vaccinations help the individual animal resist / fight off exposure to pathogenic bacteria and viruses by enhancing the animals' immune system. This is especially important in animals that are young or animals that live rather solitary or isolated lives like most of our pets do. When placed in a group situation the risk of exposure to a pathogenic organism is significantly increased. An animal that is not or is under-vaccinated is at risk. Also well-vaccinated animals will be healthier and thus pose less of a risk for other animals while being able to fight off an exposure to themselves effectively.

Below are the most common pathogens routinely vaccinated against. Have a discussion with your veterinarian as to which vaccinations are appropriate for your dog's life style.

Rabies It is required by law in the state of Wisconsin that every dog over 5 months of age has a current Rabies vaccine. Rabies is a fatal viral infection of the nervous system that attacks all warm-blooded animals including humans. It is a public health hazard and risk to all pet owners. There is no cure for Rabies. Vaccination is your pet's only protection.

DHPPL4 (Distemper, Hepatitis, Parvovirus, Parainfluenza, Leptospirosis) are widespread, contagious, and deadly diseases. Nearly every dog will be exposed during its lifetime making vaccination a must.

Distemper This is a virus that animals are exposed to in their environment causing multiple clinical signs progressing to nervous system involvement and death.

Hepatitis / Adenovirus This virus is spread when the animal comes into contact with fecal and urine contaminated environments. The liver is primarily affected causing decreased appetite, fever and possible death.

Parvovirus This is a contagious virus that causes bloody diarrhea and immune suppression. In non-vaccinated animals this can be fatal. It is spread by contact with direct contact with infected feces and contaminated environments.

Bordetella / Parainfluenza Bordetella and parainfluenza are components of Kennel Cough disease. Kennel Cough is a very contagious disease and is spread in the air and on items such as clothing. Kennel Cough causes a hoarse, barking cough that can lead to pneumonia.

Leptospirosis Leptospirosis is a disease that can affect humans and animals, including your pets. All animals can potentially become infected with leptospirosis. While for many years occurrence among pets was rare, the disease has been diagnosed more frequently in the past few years.

If your pet has become infected, it most likely they came into contact with the bacteria in the environment or was exposed to infected animals. Your pet may have been drinking, swimming, or walking through contaminated water. Because of increased building and development into areas that were previously rural, pets may be exposed to more wildlife, such as raccoons, skunks, squirrels, opossums, or deer that are infected with leptospirosis. Dogs also may pass the disease to each other, but this happens very rarely.

In some cases, shedding of leptospires in the urine may persist for as long as 3 months after infection as a result of inadequate or lack of treatment. Always contact your veterinarian and your physician if you have concerns about a possible exposure to an infected animal.

Lyme Dogs become infected with Lyme disease when a deer tick infected with *Borrelia burgdorferi* takes a blood meal on them. The tick is not able to transmit the *Borrelia burgdorferi* bacteria as soon as they attach to the animal, instead they require 24 to 48 hours of feeding to inoculate the animal. The tick passes the bacteria through their salivary glands and into the host animal. Once inoculated the bacteria migrates through the connective tissue and eventually take up permanent residence in tissue such as the heart and lungs.

The deer tick has four different stages in its life cycle. They are the egg, larval, nymph and adult stages. During the larval and nymph stages the ticks are infected with *Borrelia burgdorferi* from feeding on wild rodents. There is not direct bacterial transfer from the adult to the next generation of ticks. The adult deer tick then passes on the bacteria to whatever animal it attaches to. Although deer are the preferred hosts for deer ticks, they are not considered to be a disease reservoir. The ticks that carry *Borrelia burgdorferi* are most often found in the northeastern, upper midwestern and western coastal states where tick infestation are more common.

Most of the dogs that are exposed to *Borrelia burgdorferi* do not develop clinical infections. However when a dog does develop a clinical infection signs can include fever, stiffness of the legs, limping, swollen joints and lymph nodes, a reluctance to move, lethargy, depression, vomiting and/or a loss of appetite. Some of the less common signs of Lyme disease include diarrhea, weight loss and edema. In severe cases, destructions of the kidney's filtration system occurs resulting in protein loss and irreversible kidney failure.

Diagnosis of Lyme disease is determined by the presence of a positive blood test and observation of clinical signs. A C6 blood test is a test that is sensitive to a peptide based on a surface protein of the *Borrelia burgdorferi* bacteria. This test is included in the 4Dx SNAP test that is available through your veterinarian. This test is considered a patient side test meaning that it can be done in the clinic and can take 15 to 20 minutes to get the results. The 4Dx SNAP test also tests for Anaplasmosis and Ehrlichiosis, which are two additional tick-borne diseases, and heartworm disease.

If your pet is diagnosed with Lyme disease your veterinarian may want to submit a urine sample to check their protein-creatinine ratio for kidney failure. To treat your pet for Lyme disease, your veterinarian will start them on a course of antibiotics that lasts for about 1 month. Vaccination against Lyme Disease during the antibiotic course is also highly recommended.

Lyme disease can be prevented through the monthly use of a flea and tick preventative product such as Frontline Gold[®], Nexgard[®] or Revolution[®]. If your dog frequents areas that are known to have a lot of ticks it would also be beneficial to have them vaccinated against Lyme disease every year. While the vaccination is not a 100 percent guarantee it does dramatically reduce the severity of the infection. It is also important to remove ticks as soon as you find them on your pet. To remove the tick, grasp them as close to the skin of your pet as possible with a tweezers and pull slowly but firmly. It is very uncommon to leave the head of the tick in your pet if you remove the tick this way. Yearly 4Dx testing for the three tick-borne diseases as well as heartworm disease is highly recommended. Once your dog has been diagnosed as having Lyme disease through a 4Dx test future tests may show a positive result because of residual antibodies present in the blood.

Ticks are most commonly found in taller grassy areas and can even be found in the grass alongside the road as well as in wooded areas. Also, ticks only need temperatures above 32 degrees for a few days to become active. Due to these reasons it is recommended to keep your dog on a monthly flea and tick preventative year round.

INTERNAL AND EXTERNAL PARASITES

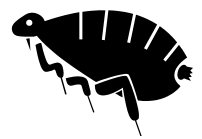
Internal Parasites

Intestinal parasites Intestinal parasites can be transmitted to both people and animals. These parasites are spread by coming into contact with contaminated feces or consuming improperly prepared wildlife. There are several different types of intestinal parasites including roundworms, tapeworms, hookworms and whipworms. These can threaten your pet's health. Large numbers can cause intestinal blockages, bloody diarrhea and even premature death. Regular microscopic examination of your pet's stool should be done for early detection and treatment.

Heartworm Disease Heartworms are parasites that live in both the heart and lungs. This causes signs of heart disease (coughing, lack of energy and rapid breathing). This is a life-threatening disease wherever mosquitoes are present. This parasite is transmitted by the mosquito and is a contagious disease. Your pet must be tested prior to starting on preventive medication. Use of preventive medication in an infected dog could result in death. Annual testing is recommended even in year-round use of medication. Year round preventative medication use is a must!

External Parasites

Fleas Fleas can cause anemia and even death in young pets. If swallowed, fleas can transmit tapeworms to your pet. Flea bites can cause allergic reactions resulting in a painful, difficult-to-cure skin disease. A flea control program is needed on pets, home, and yard **AT THE SAME TIME**. Your veterinarian is best qualified to prescribe the proper products for you to control these parasites.



Ticks Ticks can cause various tick-borne diseases that can affect your pet for their entire life, such as Lyme disease, anaplasmosis or ehrlichiosis.

GENERAL HEALTH

Spaying or Neutering is recommended for all pets not intended for breeding. This surgery may significantly reduce the risk of future health problems such as breast tumors, testicular disease, cancer, and certain undesirable behavior. The surgery is recommended when your pet is about six months old, but it can be done at any age.

Dental Health Care is just as important for your pet as it is for you, yet it is one of the most neglected health needs. Dental examinations should be done at least annually. Periodontal disease affects most pets and can lead to infection in the liver, kidneys, and heart. Bad breath, depression, drooling and acute pain while eating are signs of periodontal disease. Regular examination, professional cleanings, and proper dental home care are necessary for good pet health.

Geriatric Workups help detect many of the problems caused by aging (kidney, liver, heart, arthritis, dental, etc.). Early detection can lengthen your pet's life. Proper treatment will improve your pet's quality of life.

SIGNS OF ILLNESS IN DOGS

Owners who observe and handle their healthy dogs have a head start on recognizing early signs of illness in their pets. Those who know what a healthy pet acts, feels, and smells like can spot differences in behavior and bodies and

determine whether a trip to the veterinarian is necessary. Healthy dogs have a temperature of 100.5-101.5 °F, a respiratory rate of 15-20 breaths per minute, and a heart rate of 80-120 beats per minute. They have pink mucous membranes (gums, inside of lips, tongue, inside of eyelids) and rapid capillary refill action in these areas. They have clean-smelling ears and skin and a full hair coat. Their skin is pliant, an indication of proper hydration, and their eyes are clean and bright.

If your puppy or dog shows any of the following signs, be prepared to call your veterinarian.

- Eyes: swelling, discharge, redness, etc.
- Nose: running, crusting, discharge, etc.
- Ears: discharge, debris, odor, twitching, scratching, shaking, etc.
- Coughing, gagging, sneezing, retching, or vomiting.
- Irregular breathing, shortness of breath, prolonged, or heavy panting, etc.
- Intestinal activity
 - Color, consistency, frequency of bowel movement
 - Bloody stool
 - Evidence of parasites, etc.
- Change in amount of food intake
- Change in body weight
- Change in water intake
- Urine: color, frequency, amount, straining, dribbling, etc.
- Odor: mouth, skin, ears, etc.
- Coat & Skin: wounds, tumors, hair loss, dander, color change, biting, scratching, bite marks, parasites, licking, etc.
- Behavior: depression, anxiety, fatigue, lethargy, sleepiness, trembling, stumbling, failing, etc.

Noticing a sign is half the battle, keeping a record helps the veterinarian make a diagnosis. Be sure to note when the symptom first appeared, and whether it has been intermittent, continuous, increasing in frequency, getting better, or getting worse before calling the veterinarian.

Class Guidelines

GENERAL GUIDELINES

- 1) To have fun and meet friends.
- 2) To compete in the County Fair Dog Show and/or State 4-H Dog Show competitions.
- 3) To promote teamwork and cooperation with other 4-H members.
- 4) Dog must only be trained outside of class by the same person who brings him to weekly classes.
- 5) Practice sessions should be 15-20 minutes long for beginner dogs, 20-30 minutes for advanced dogs.
- 6) Always play with your dog after practice sessions – always leave with a happy dog.
- 7) You must correct your own dog in class – unruly dogs that are not corrected, will not be allowed to work in a class.
- 8) Do not feed your dog after 12:00 Noon on training nights.
- 9) You must clean up after your own dog. Every “poop you scoop” earns an entry in the “Pooper Scooper Award” bucket. See a board member upon cleaning up after your dog.
- 10) Never allow your dog to come in contact with another dog at a training session.
- 11) Praise your dog each time he obeys a command, even if you made him do it.
- 12) No corrections will be made with your feet.
- 13) Never grab your dog by his skin.

- 14) The dog and handler must have completed one year of obedience training in the 4-H Dog Project in order to participate in first year agility, rally, team or brace. If the dog and handler have not trained together previously, dog/handler team must perform a basic obedience skills test for two or three instructors on the first night of training. This test could include: basic heeling pattern, sit, down, 5-10 second stay and a recall on leash.

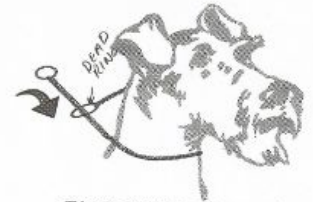
THE RIGHT WAY TO PUT ON A TRAINING COLLAR



Place the collar around the dog's neck as if it makes a letter "P" as you are facing the dog. This ensures the collar will release properly when training.



This collar *has* been put on correctly. Notice how the collar from the live ring goes over the dog's neck.



This collar has *not* been put on correctly. Notice how the collar from the live ring goes under the dog's chin. This collar will not release properly.

AGILITY GUIDELINES

Criteria for participation:

- Since the dogs will be working on and off leash, they must be under voice control and not display aggression towards dogs or people.
- Dogs must be in good health; dogs that are blind, lame, dysplastic or extremely overweight will not be able to participate.
- Equipment needed: flat buckle collar with no tags attached and 6' obedience leash.

Activities:

- Handlers will learn how to teach their dogs to safely and independently execute the required obstacles.
- Dog and handler will learn directional commands & sequencing (putting the obstacles together)
- Working distance

What to bring to training/county show:

- Your dog's favorite food treats and/or toy motivator (Note: No food, toys, whistles, fanny packs, etc. allowed in the ring on show day.)
- Poop clean-up bags
- Water for your dog
- Rubber-soled shoes that tie or Velcro (no flip-flops or sandals)
- Familiarization on contact pieces (A-frame, teeter, and dog walk) is allowed at shows.

Jump Heights:

- 4 inches; for dogs 10 inches and under at the shoulder
- 8 inches; for dogs greater than 10 inches and up to 14 inches at the shoulder
- 12 inches; for dogs greater than 14 inches and up to 18 inches at the shoulder
- 16 inches; for dogs greater than 18 inches at the shoulder
 - Veteran dogs (7 years old and up) and young dogs (18 mo. and younger) jump one height lower.

Placement and Advancement:

- First Year=Pre-Novice (on leash).
- Returning member advances depending on score from previous year's county or state show

- Advancement to Novice or Open (off leash)
 - AKC perfect score is 100 points. You must receive a qualifying score of 85 points in either the County or State 4-H Dog show in order to advance from Pre-Novice to Novice Agility; and likewise, Novice to Open.
 - If a dog is unable to work off-leash, the handler may train as usual during the season, but may show for exhibition only at the County Show.

Standard Agility Training Skills at each level:

Pre-Novice (on leash)	Novice (off leash)	Open (off leash)
A-frame	<i>ALL pre-novice plus</i>	<i>ALL novice plus</i>
Tunnel	Tire jump	12 Weaves
6 Weaves		Wing Jump
Jumps		Double Jump
Dog Walk		Triple Jump
Teeter-Totter		Broad Jump
Table		Panel Jump

Jumps, Tunnel, Table (JTT):

Pre-Novice (on leash)	Novice (off leash)	Open (off leash)
Tunnel	<i>ALL pre-novice plus</i>	<i>ALL novice plus</i>
Jumps	Tire Jump	12 Weaves
Table		Wing Jump
6 Weaves		Double Jump
		Triple Jump
		Broad Jump
		Panel Jump

SHOWMANSHIP GUIDELINES

Classes

- Junior Showmanship, Grades 3-6
- Junior Showmanship, Grades 7-9
- Junior Showmanship, Grades 10-13
- Open Showmanship, 8th Grade and under (all youth who have received top placing in class the previously)
- Open Showmanship, 9th Grade and up (all youth who have received top placing in class the previously)

Showmanship Equipment:

- Treats or small toy
- Thin leather/nylon lead and thin snake chain or choke chain
- Bait Bag (to hold treats)

Note: Obedience and Showmanship have different equipment. Please make sure to ask your trainer what they suggest for lead/collars.

What you will learn:

- How to gait smoothly around the ring and through each pattern
- How to stack quickly and accurately
- How to groom your dog such as bathing, brushing and trimming nails
- To identify different parts of your dog and where they are.
- The specifics of your breed such as the correct breed name, where the breed originated, what group
- What to wear to impress and set you apart from everyone else in the ring.

- How to be calm and smooth through all movements you make
- How to keep your dog between you and the judge in order to allow the judge the best view of the dog at all times.
- How to read a judge and react in a timely fashion to what a judge asks of you.

Procedures for while in the ring:

- Each dog will enter the ring and go all the way around on the matting
- Each handler will need to then stack their dog on the edge of the matting
 - The judge may rearrange the group by height
- Each handler and dog will need to go through an exam with the judge
 - The judge will ask you to show your dog's bite
- After the judge examines your dog, you will be asked to do one of the patterns you learned during training
- After completing your pattern the judge will ask you to go all the way around the ring
 - As you go completely around the ring, you should stop near the end and free stack your dog for the judge to see, away from the rest of the group
- Once the judge has completed the class's examinations, the judge will go through the line and pick the top handler/dog pair of the class.
 - You must make sure you are always ready and paying attention to the judge.
- All handler/dog pairs will be asked to go around the ring together one last time and the judge will then pick placings and hand out ribbons.
- All handlers and dogs will exit the ring. The winner of the class will be asked to stay nearby as he/she will need to go back in the ring for best junior handler competition after all showmanship classes are judged.

Terms to know:

Gait in Circle:

When first entering ring and gaiting in circle, give the impression of confidence and animation. Do not be too timid as this may make your dog nervous. Be attentive, keep eye contact with the judge, and smile at the judge to demonstrate that you want to be there. Avoid crowding but don't lag. You should leave ample space for your dog to be shown.

What the judge is looking for: Is the handler too timid or confident? Is the handler aware of allowing space?

Proper Gait:

If your dog is inexperienced, coax him with bait or short jerks but do not drag him. Walk at the appropriate speed, which depends on the size of your dog.

What the judge is looking for: Is the pace, gait, and speed adequate for the size of the dog? Is the exhibitor hauling the dog or leading it?

Animation:

Ensure that your dog looks happy but not overly excited and that you look confident and cheerful for all portions of the showing.

What the judge is looking for: Is the handler smiling? Does the dog look sad or happy?

Proper Set Up:

It shouldn't take you more than a couple of seconds to set up your dog. You shouldn't over-handle as it shows a lack of training for your dog. If your dog is a mixed breed, set it up to the breed it most resembles.

What the judge is looking for: How long does it take to set the dog up for presentation? Does the exhibitor over-handle? Is the dog stacked properly for the breed? Does the handler set up the dog's legs in the correct order relative to the judge's position?

Presentation for Individual Examination:

The hand should never cover the muzzle. When holding the lead, put as much of it as is possible in your hand. The lead should not hang.

What the judge is looking for: Does the hand cover the muzzle? (Advanced exhibitors: For breeds where the lead is used for presentation, how much of the lead is showing and how much is held in the hand? Does the lead hang loosely from the hand?)

Courtesy Turn:

As courtesy to the judge, courtesy turns are highly recommended before beginning the pattern the judge has requested.

What the judge is looking for: Does the exhibitor turn the dog in a circle before starting the individual run?

Control of Dog:

Sometimes after being gaited, your dog can get a little excited. You can calm him down by talking to him. Never hit your dog in the ring. It just shows a lack of patience on your part.

What the judge is looking for: Is the dog under control after having been gaited individually? Does the exhibitor keep control after returning to the end of line or does he relax his attention to his dog? Is the exhibitor holding up others? Is the exhibitor abusive to his dog?

Examination after Gaiting:

The exhibitor should free stack the dog without touching the dog. The exhibitor can move the dog forward a few steps or in a circle to correct the dog's stance.

What the judge is looking for: Did the exhibitor touch the dog? How long did it take the exhibitor to stack the dog?

Return to Line-up:

After finishing your exercise, return to the end of the line. Immediately set up your dog because the judge, most of the time, will still be watching. Ensure proper spacing between you and the dog in front of you.

What the judge is looking for: Does the exhibitor set up the dog immediately? Is the exhibitor crowding the dog in front of him? Is the exhibitor still paying attention?

Attention to Judge:

Always keep your eyes on the judge and your dog. Always do whatever the judge says and do it happily. Say thank you to the judge and address them as “ma’am” or “sir.” Never talk to other handlers or people outside the ring. It is distracting and disrespectful.

What the judge is looking for: Does the exhibitor follow instructions? Is the exhibitor courteous? Is the exhibitor talking to other handlers or people outside the ring?

Grooming:

What the judge is looking for: The dog's nails should be cut; teeth and ears clean; and the coat clean, brushed, and free of mats. The dog's face and eyebrow whiskers should be trimmed. The hair on the feet and between the toes should be trimmed on certain breeds.

Personal Appearance:

Girls should wear a dress or a skirt and blazer. Avoid deep cut V-neck shirts. Boys should wear a nice shirt and dress pants (a tie is a nice touch but is optional). Avoid patterns or graphics that distract from your dog. Hair at shoulder length or longer should be pulled back.

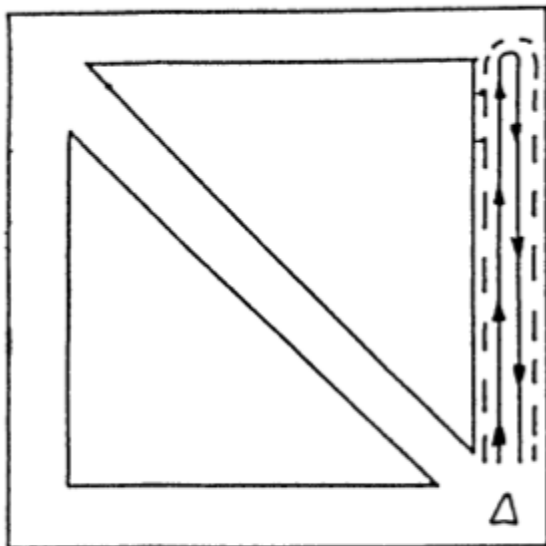
What the judge is looking for: Is the exhibitor appropriately dressed?

Questions:

Questions are used to evaluate how you interact with the judges. The questions will be of general knowledge. (Example: “What breed of dog do you have?” “How long have you been in the dog project?”)

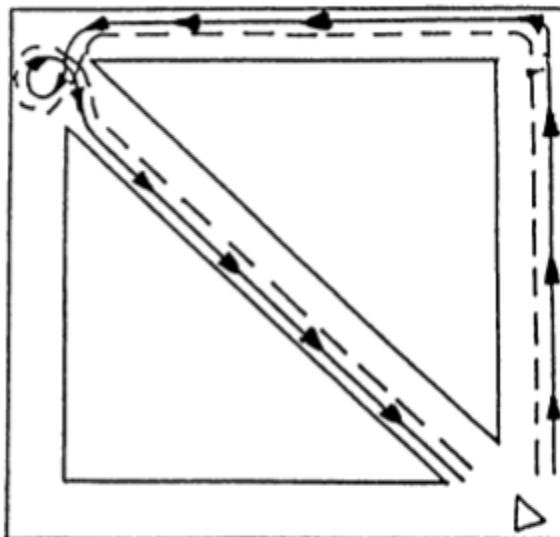
SHOWMANSHIP PATTERNS

THE "I" PATTERN



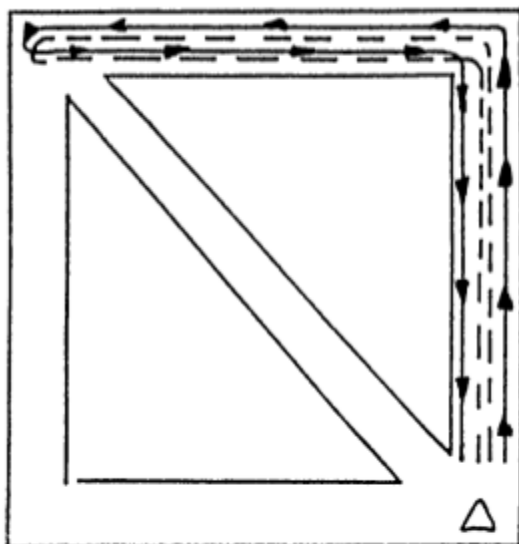
With dog on left side, go straight down the ring, turn to the right and return to the Judge. Keep dog on left side.

THE TRIANGLE PATTERN



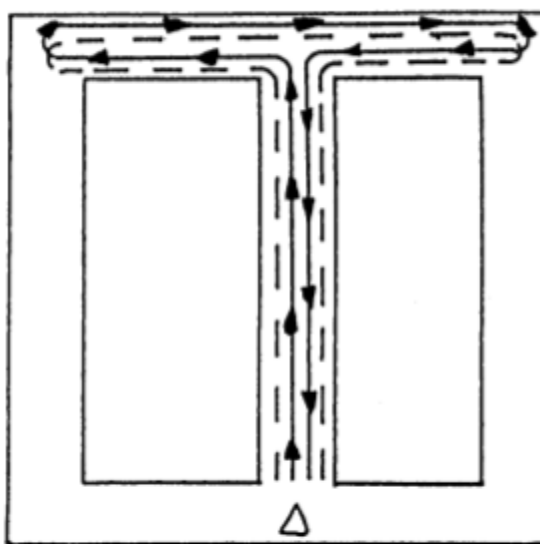
With dog on left side, go straight down and across the ring. Turn in small circle and return to the Judge on the diagonal. (dog remains on left side.)

THE "L" PATTERN



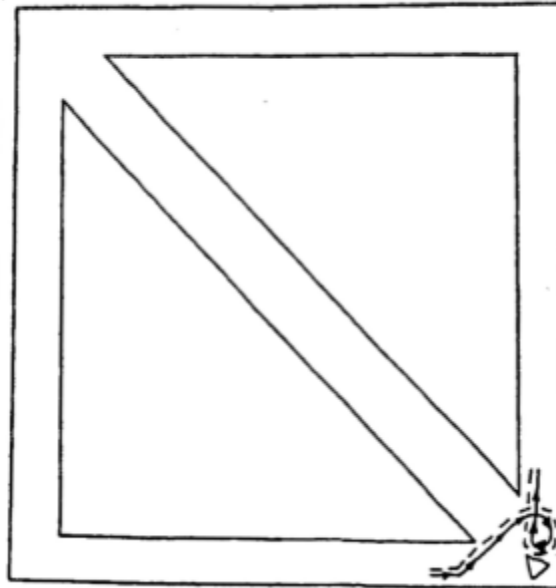
With dog on your left side, go straight down the mat and turn to the left. Go to the corner and switch hands. Return to right top corner and switch again to the left hand. Return to Judge.

THE "T" PATTERN

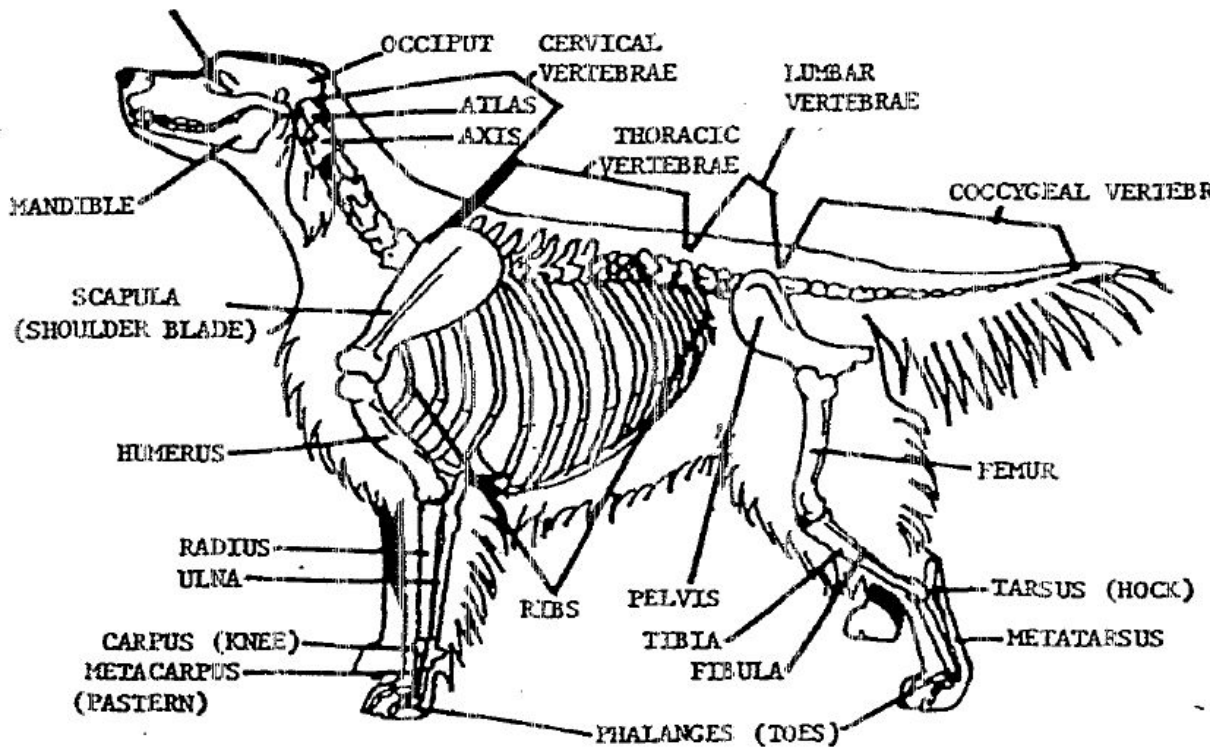


With dog on left side, go down center of ring, turn to the left and at end of mat switch lead to right hand and go all the way across to the end of the mat. Switch lead back to your left hand and return up the center to the Judge.

THE COURTESY TURN

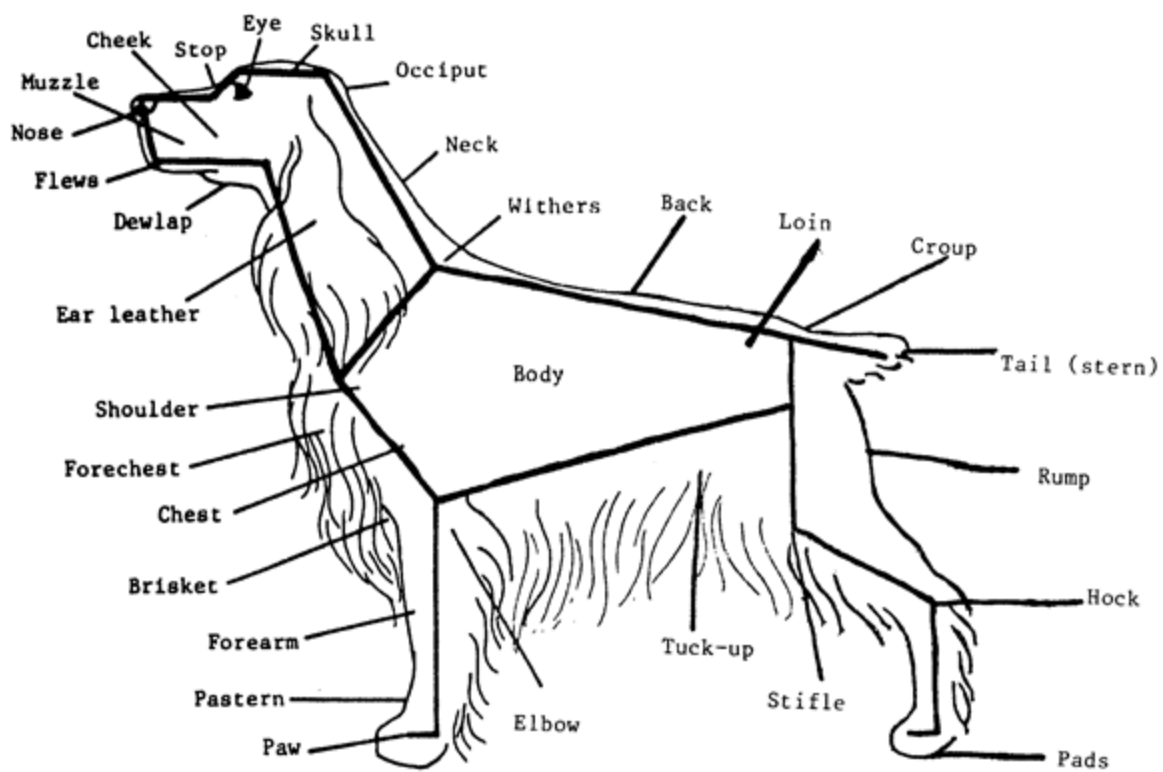


SKELETAL DRAWING OF A DOG



ANATOMY

OF A DOG



Bite: Position of teeth (even, scissors, undershot, or overshot)

Feathers: Fringe of hair on ears, legs, and tail

Shirt Frill: Chest feathers

Petticoat: Rump feathers

BREED VARIANCE

There are many things that are different for each breed of dog:

- | | |
|-------------------|----------------------------|
| a. Head carriage | f. Lay of the coat |
| b. Tail carriage | g. Position of the leash |
| c. Top line | h. Position of the handler |
| d. Ear set | i. Position of the hands |
| e. Foot placement | j. Use of bait |

TEAM OBEDIENCE GUIDELINES

- 1) Must be a 4-H member enrolled in the Dog Project, and must be able to show at the County and/or State 4-H Dog Show.
- 2) 4-H member may participate with a dog other than the dog used in the regular Obedience classes, but must meet all other general guidelines and regulations, and qualifications for training and exhibiting, as printed in this handbook.
- 3) There are two classes of Team Obedience – Pre-Novice and Novice. For a 4-H Dog Project member to participate in Team Obedience you must meet the following guidelines:
 - a) To participate in **Pre-Novice Team Obedience**, a 4-H member must have been in 4-H Obedience at least one year, and the dog must also have had at least one year’s training.
 - b) To participate in **Novice Team Obedience**, a 4-H member must have trained in Obedience at least one year and have knowledge of the Novice exercises and the dog must be training at the Novice Obedience level or higher.
- 4) There are five members to a team, four regular team members and one alternate. The alternate will show if one of the other team members cannot participate.
- 5) Training sessions will be held when there are enough participants to form a team. Training time and place will be determined by coaches and team participants, and will be held until the County Fair Dog Show or State 4-H Dog Show, whichever competition comes last.

PRE-NOVICE RULES:

All exercises will be done on a six (6) foot lead.
Three of the four members must be at the Pre-Novice level.
Pre-Novice obedience scoring will be followed.

NOVICE RULES:

Dogs can be at Novice level or above.
Exercises are performed on and off lead as in the regular Novice class.
Novice obedience scoring will be followed.

BRACE OBEDIENCE GUIDELINES

- 1) There will be two brace classes offered: pre-novice and novice.
 - i) Pre-Novice Brace – One dog must be working at the pre-novice level and the 2nd dog can be working at a novice or above level.
 - ii) Novice Brace – Both dogs must be working at a novice or above level.
- 2) Dogs may be shown unattached or coupled, the coupling device to be not less than six inches overall length. The brace should work in unison at all times.

RALLY OBEDIENCE GUIDELINES

What is Rally? AKC Rally is all about teamwork and provides a link from the canine good citizen (CGC) Program to obedience or agility competition for both the dogs and the handlers. The dog and handler move through a course with signs displaying different skills to perform together at their own brisk pace. The courses are designed by the rally judge with 10-20 signs per course, depending on the class level. The signs display various types of turns and skills, such as sit, down, stay, etc. as well as directional arrows. The signs are numbered to make it easy to find the next station when navigating the course. All signs are placed to the handler's right side. The signs are large enough to be easily recognized when going through a course. The team should perform the sign near the designated sign. Rally was designed with the traditional pet owner in mind, and promotes fun and enjoyment for dogs at all levels of competition. Unlimited communication from the handler to the dog is to be encouraged and perfect heel position is not required, but there should be a clear sense of teamwork and enthusiasm both during and between the numbered signs as they go through the course together. While touching isn't allowed, you can use verbal commands, clap your hands, pat your legs and use hand signals to praise and encourage your dog. Scoring is not as rigorous as traditional obedience.

There are five levels of competition:

Novice - this is the first level. All exercises are performed with the dog on leash. There is a requirement of 10-15 stations to complete with no more than five stationary exercises. The exercises performed vary from turning 360° to changing paces during the course and calling to a front.

Intermediate - this is the second level, which includes advanced class signs, all exercises are performed on leash and there are no jumps. There is a requirement of 12-17 signs to complete, with no more than seven stationary signs.

Advanced - this is the third level, which includes more difficult exercises throughout the course. All exercises are performed off leash. There is a requirement of 12-17 stations with no more than seven stationary exercises. Exercises include a jump.

Excellent - this is the fourth level. Exercises are performed off leash. There is a requirement of 15-20 stations, with no more than seven stationary exercises. Handlers are only allowed to encourage their dogs verbally. Physical encouragement, such as patting their leg, is not allowed at this level. The excellent level exercises include backing up three steps, while the dog stays in the heel position and a moving stand, while the handler walks around the dog. There are two required jumps in this class.

Masters - This is the fifth and highest level and is the most challenging. Exercises are performed off leash. There is a requirement of 15-20 stations, with a minimum of three and a maximum of seven stationary exercises. One jump is required. Handlers are only allowed to encourage their dogs verbally.

Equipment needed: Flat buckle collar and 6' obedience leash.

Jump heights:

- 4 inches=for dogs 14 inches and under at the shoulder
- 8 inches=for dogs greater than 14 inches and under 18 inches at the shoulder
- 12 inches=for dogs greater than 18 inches at the shoulder

Veteran dogs (7 years old and up) and young dogs (18 months and younger) jump one height lower (4" minimum).

All dogs and handlers begin with a perfect score of 100. A dog and handler team is awarded a qualifying score if they retain at least 70 points after the course has been completed. Each performance is timed, but times are only counted toward awards if two dogs earned the same score.

DOG QUIZ BOWL GUIDELINES

PURPOSE:

- 1) To have fun and meet new friends.
- 2) To educate Dog Project members with different aspects of the wide world of dogs and total dog care.
- 3) To compete in the State 4-H Dog Quiz Bowl event which is held at the State 4-H Dog Show.
- 4) To direct you towards a future career.

RULES:

- 1) Must be a 4-H member enrolled in the Dog Project.
- 2) 4-H members may participate even without a dog.
- 3) Junior members – grades 3rd – 7th
Senior members – grades 8th – 13th
- 4) Meetings are held at the coach's discretion. Generally, the teams will meet twice a month starting in May. Once school is out, weekly meetings will be held until the State 4-H Dog Show.
- 5) Members will generally be given a written test to determine chair positions.
- 6) Captains will generally be chosen according to written test results, attendance, and sportsmanship.
- 7) Expected to attend 50% of the practices

Interested persons may contact: Angela Spicer Buesing (acspice21@yahoo.com), or adult dog board member.

Dog Project Committee Guidelines

PURPOSE AND FUNCTION OF 4-H DOG PROJECT BOARD

- 1) Plan and coordinate educational activities, community outreach and dog shows.
- 2) Create and enforce standards and goals of the project.
- 3) Maintain communication with the Sheboygan County 4-H Leaders Association.

DOG PROJECT COMMITTEE

- 1) 8 adult members (2 year term)
- 2) 4 youth members (2 year term)
- 3) 4-H Youth Development Staff (advisor role)
- 4) Chairman, Secretary, Treasurer, Director of Training, Equipment Manager and any other officers are elected by board members from the current board.

COMMITTEE GUIDELINES

- 1) Members serve a two year term. Each year half the positions are up for election (4 adult and 2 youth).

ELECTIONS

- 1) Nominations for the Dog Board must be made in writing to the UW-Extension Office.
- 2) Ballots will be prepared by Extension staff and mailed to project members. The ballot cards must be returned to the Extension Office by the stated due date.
- 3) Ballots are tabulated by the Extension Office Youth Development Staff.
- 4) New board members generally begin their terms in October.
- 5) Exiting members remain as participants through the transition of new members as necessary.

SUB-COMMITTEES

Sub-committees may be utilized by the board to carry out the following activities:

- | | |
|------------------------------|--|
| 1) County Dog Show | 6) Public Education/Dog Project Promotion (Outreach) |
| 2) State Dog Show | 7) Scholarship |
| 3) Fun Match | 8) Fundraisers or raffle |
| 4) Fun Night | 9) Food Stand |
| 5) Agility/Equipment/Trailer | |

4-H Dog Project Adult Leaders

POSITION QUALIFICATIONS

- 1) Be able to attend 75% of all Board Meetings and Training Sessions.
- 2) Be willing to serve in any capacity within the Dog Project.
- 3) Be able to work well with youth and adults.
- 4) Be able to volunteer at least 3 hours per week during summer months.
- 5) Have organizational abilities.
- 6) Be familiar with the goals of the 4-H Program and Dog Project.

DUTIES AND RESPONSIBILITIES

- 1) Coordinate activities and schedule training assignments.
- 2) Coordinate and attend project orientation and general meeting/training nights.
- 3) Enforce standards and goals of the project.
- 4) Coordinate the Sheboygan County Fair Dog Show, and assist during the set-up, show hours and clean-up.
- 5) Encourage and utilize the Youth Leaders.
- 6) Develop an annual budget, monitor project finances, and assist with all project fund-raisers.
- 7) Complete a County 4-H Charter document annually.
- 8) Maintain regular communication with County 4-H Staff and encourage staff involvement and knowledge of the activities of the project.
- 9) Coordinate with the State Dog Show Committees, State 4-H Dog Board and/or our area representative to that organization.

4-H Dog Project Youth Leaders

POSITION QUALIFICATIONS

- 1) Be able to attend 75% of all Board Meetings and Training Sessions.
- 2) Be at least 6th grade by January 1st of the new 4-H year.
- 3) Possess leadership qualities.
- 4) Be responsible and dependable.
- 5) Be able to communicate with youth and adults.

DUTIES AND RESPONSIBILITIES

- 1) Provide assistance to the adult committee members and trainers and facilitate and help coordinate project activities.
- 2) Coordinate and attend project orientation and general meeting/training nights.
- 3) Assist project fundraisers.
- 4) Act as liaisons between the Dog Project members and the Dog Board.

SHEBOYGAN COUNTY 4-H DOG PROJECT SCHOLARSHIP APPLICATION

DESCRIPTION:

Scholarship will be awarded as funds allow.

ELIGIBILITY:

- 1) Must be 17-21 years old as of August 1st of the current year.
- 2) Must complete at least 2 consecutive years in the Dog Project.
- 3) Must be graduating the year of application or previously graduated from the 4-H program and the 4-H Dog Project with completion of all project requirements.

REQUIREMENTS:

- 1) Two letters of recommendation:
 - a. Project Leader or Trainer.
 - b. One from any other source - example: employer, teacher, 4-H leader other than Dog Project.
- 2) Application along with 200-300 word essay and oral interviews as needed.
- 3) Must be used at an accredited school.
- 4) Must show proof of acceptance by the school you will be attending while using the scholarship (required only after you have been selected).
- 5) Proof from county club leader or Extension Office that you have graduated from the 4-H program.

COMMENTS:

- 1) This scholarship may only be earned once.
- 2) If your Dog Project requirements are not met during your last year in the 4-H, your scholarship will be forfeited to the next eligible candidate.
- 3) All forms must be turned in to the UW-Extension Office, Attn: 4-H Youth Development, 5 University Drive, Sheboygan, WI 53081 no later than June 1st, with possible interviews being held at the UW-Extension Office.
- 4) Additional applications may be picked up at the UW-Extension Office.
- 5) Scholarships will be paid in the name of the school and the recipient. Recipients must inform the Dog Project Board Treasurer how the school wants this check made out.

If you have any questions regarding this scholarship, you may call the UW-Extension Office.

4-H DOG PROJECT SCHOLARSHIP APPLICANT RATING SHEET

Applicant's Name: _____

	Possible	Score
<ul style="list-style-type: none"> • Leadership & Teaching in the County 4-H Dog Project Comments:	25	
<ul style="list-style-type: none"> • 4-H Project Accomplishments Comments:	25	
<ul style="list-style-type: none"> • Quality of Recommendation Comments:	25	
<ul style="list-style-type: none"> • Quality of Application (grammar, spelling, neatness, etc.) Comments:	25	
TOTAL	100	

4-H DOG PROJECT SCHOLARSHIP APPLICATION

Print or type. Additional sheets may be added if necessary to include all information.

Applicant's Name: _____

Permanent Address: _____

City/Zip: _____

Phone Number: _____

Date of Birth: ____/____/____
 Month Day Year

School presently attending: _____

School Address: _____

City/ Zip: _____

Year in School: _____

Name and address of school you will be attending while using this scholarship:

Field in which you plan to study: _____

4-H INFORMATION

Name of club to which you belong(ed): _____

Number of members in Club: _____

Years in 4-H: _____

Years in 4-H Dog Project: _____

Years in Youth Leadership: _____

What did you like, learn, and accomplish in the Dog Project?

WRITE AN ESSAY answering the following question (200 – 300 words):

“How would you improve and promote the 4-H Dog Project?”

Signature of Applicant

Date

Return to: 4-H Youth Development, UW-Extension Office, 5 University Drive, Sheboygan, WI 53081 by June 1st.

EARNED ABSENT DAY FORM

Name: _____ Date of Absence: _____

Work Completed to make up missed training session—Must total 30 minutes for the week

Date: _____ Amount of Minutes _____

What exercises were practiced?

Date: _____ Amount of Minutes _____

What exercises were practiced?

Date: _____ Amount of Minutes _____

What exercises were practiced?

Signature of Trainer: _____ Date: _____

SERVICE PROJECT FORM

Name: _____ Date of Service: _____

Describe project, steps to complete project and approximate time for completion:

Signature of Board Member: _____

SHEBOYGAN COUNTY 4-H DOG PROJECT INCIDENT REPORT

Please use this form to report incidents involving any dog that shows any aggressive behavior to other dogs or people (e.g., growling, snapping, bites, dog fights, etc.)

Date _____

4-H'er _____ Dog _____

Name of Person Filing Form _____

Description of Incident:

Sign below to show that the matter was discussed with the necessary parties.

Signature of 4-H'er _____

Signature of Parent/Guardian _____

Signature of Trainer/Board Member _____

Judging and Awards

DEPARTMENT 9 – DOGS

Judging Day – Obedience, Showmanship, Rally: Saturday, August 14, 2021; Agility: Tuesday, August 17, 2021

Judging Location – Coliseum(August 14); Agility Arena(August 17)

Judging Time - 8:00 a.m. August 14 ; 5 PM August 17.

Entry Limit-1 Obedience lot, 1 Showmanship lot, 1 Standard Agility lot, 1 JTT lot, 1 Rally lot, 1 Team lot, 1 Brace lot; 2 from lots 40-45

CLASS A – DOG TRAINING

Level trained at during exhibit year

<u>Lot No./Description</u>	<u>1st</u>	<u>2nd</u>	<u>3rd</u>	<u>4th</u>
1. Pre-Beginner Novice A, open to 1 ST year member only	\$ 4.00	\$ 3.00	\$ 2.00	\$ 1.00
2. Pre-Beginner Novice B, any other Pre-Beginner Novice exhibitor	\$ 4.00	\$ 3.00	\$ 2.00	\$ 1.00
3. Pre-Novice A, open only to 1 ST year Pre-Novice dog & exhibitor	\$ 4.00	\$ 3.00	\$ 2.00	\$ 1.00
4. Pre-Novice B, open to any other Pre-Novice exhibitor	\$ 4.00	\$ 3.00	\$ 2.00	\$ 1.00
5. Novice A, open only to 1 st year Novice dogs & exhibitors	\$ 4.00	\$ 3.00	\$ 2.00	\$ 1.00
6. Novice B, open to any other exhibitor	\$ 4.00	\$ 3.00	\$ 2.00	\$ 1.00
7. Graduate Novice	\$ 4.00	\$ 3.00	\$ 2.00	\$ 1.00
8. Pre-open	\$ 4.00	\$ 3.00	\$ 2.00	\$ 1.00
9. Open	\$ 4.00	\$ 3.00	\$ 2.00	\$ 1.00
10. Pre-Utility	\$ 4.00	\$ 3.00	\$ 2.00	\$ 1.00
11. Utility	\$ 4.00	\$ 3.00	\$ 2.00	\$ 1.00
12. Rally – Novice - on leash	\$ 4.00	\$ 3.00	\$ 2.00	\$ 1.00
13. Rally – Intermediate - on leash	\$ 4.00	\$ 3.00	\$ 2.00	\$ 1.00
14. Rally – Advanced - off leash	\$ 4.00	\$ 3.00	\$ 2.00	\$ 1.00
15. Rally - Excellent - off leash	\$ 4.00	\$ 3.00	\$ 2.00	\$ 1.00
16. Rally - Master - off leash	\$ 4.00	\$ 3.00	\$ 2.00	\$ 1.00
17. Junior Showmanship, Grade 3 – 6	\$ 4.00	\$ 3.00	\$ 2.00	\$ 1.00
18. Intermediate Showmanship, Grade 7 – 9	\$ 4.00	\$ 3.00	\$ 2.00	\$ 1.00
19. Senior Showmanship, Grade 10 – 13	\$ 4.00	\$ 3.00	\$ 2.00	\$ 1.00
20. Open Showmanship youth 8 th grade & under, having received a top first place	\$ 4.00	\$ 3.00	\$ 2.00	\$ 1.00
21. Open Showmanship, youth 9 th grade & above, having received a top first place	\$ 4.00	\$ 3.00	\$ 2.00	\$ 1.00
22. Standard Agility – Pre-Novice (4 - 8")	\$ 4.00	\$ 3.00	\$ 2.00	\$ 1.00
23. Standard Agility –Pre-Novice (12-16")	\$ 4.00	\$ 3.00	\$ 2.00	\$ 1.00
24. Standard Agility – Novice (4-8")	\$ 4.00	\$ 3.00	\$ 2.00	\$ 1.00
25. Standard Agility - Novice (12-16")	\$ 4.00	\$ 3.00	\$ 2.00	\$ 1.00
26. Standard Agility – Open (4 – 8")	\$ 4.00	\$ 3.00	\$ 2.00	\$ 1.00
27. Standard Agility – Open (12 – 16")	\$ 4.00	\$ 3.00	\$ 2.00	\$ 1.00
28. JTT (Jumps/Tunnel/Table) - Pre-novice (4-8")	\$ 4.00	\$ 3.00	\$ 2.00	\$ 1.00
29. JTT (Jumps/Tunnel/Table) - Pre-novice (12-16")	\$ 4.00	\$ 3.00	\$ 2.00	\$ 1.00
30. JTT (Jumps/Tunnel/Table) - Novice (4-8")	\$ 4.00	\$ 3.00	\$ 2.00	\$ 1.00
31. JTT (Jumps/Tunnel/Table) - Novice (12-16")	\$ 4.00	\$ 3.00	\$ 2.00	\$ 1.00
32. JTT (Jumps/Tunnel/Table) - Open (4-8")	\$ 4.00	\$ 3.00	\$ 2.00	\$ 1.00
33. JTT (Jumps/Tunnel/Table) - Open (12-16")	\$ 4.00	\$ 3.00	\$ 2.00	\$ 1.00
34. Team Obedience -- Pre-Novice	\$ 4.00	\$ 3.00	\$ 2.00	\$ 1.00
35. Team Obedience -- Novice	\$ 4.00	\$ 3.00	\$ 2.00	\$ 1.00
36. Brace - Pre Novice	\$ 4.00	\$ 3.00	\$ 2.00	\$ 1.00

37. Brace - Novice	\$ 4.00	\$ 3.00	\$ 2.00	\$ 1.00
--------------------	---------	---------	---------	---------

CLASS B – DOG PROJECT DISPLAYS

Judging Day - Monday of the week preceding the fair

Judging Location - South Exhibit Hall

Judging Time - 1:00 - 7:00 p.m.

Additional Rule of Entry - Open to all youth enrolled in the dog project

<u>Lot No./Description</u>	<u>1st</u>	<u>2nd</u>	<u>3rd</u>	<u>4th</u>
40. Poster (14 x 22) telling the history of a breed	\$ 1.50	\$ 1.25	\$ 1.00	\$.75
41. Scrapbook containing the following information: Pictures of 10 popular breeds of dogs Description of each breed	\$ 1.50	\$ 1.25	\$ 1.00	\$.75
42. Poster (14 x 22) - "how to keep a dog healthy" Cover one of the following topics: Grooming and exercise Food and nutrition Preventing disease	\$ 1.50	\$ 1.25	\$ 1.00	\$.75
43. Poster (14 x 22) - other	\$ 1.50	\$ 1.25	\$ 1.00	\$.75
44. Dog costume	\$ 1.50	\$ 1.25	\$ 1.00	\$.75
45. Useful dog item	\$ 1.50	\$ 1.25	\$ 1.00	\$.75

AWARDS

Sportsmanship Award

Trainers will nominate one child from each training class. Nominations are due prior to the last training session. All 4-H dog project members are eligible to vote for one candidate. Election will take place at County Dog Shows in a manner determined by the Dog Board and award will be given at Family Night.

Class Awards

In Obedience and Rally Classes, awards will only be given for a qualifying score.

Best Junior Handler

Winners of each showmanship class at the County Dog Show are eligible. This award is up to the judge's discretion. Best Junior Handler is awarded the Spicer Memorial Travelling Trophy.

Highest Scoring Dog in Trial

Awards will be given to highest scoring dog at County Dog Shows

Obedience

Pre-Novice B and below

Novice and above

Agility

Standard: Pre-Novice thru Open

JTT: Pre-Novice thru Open

Team

Pre-Novice thru Novice

Rally

Novice thru Masters

Brace

Pre-Novice thru Novice

CLASSES AND SCORING

TEAM

PRE-NOVICE

(4 team members)

Heel on 6' leash & Figure 8	320 points
Stand for examination	120 points
Recall	120 points
Long sit (1 minute)	120 points
Long down (1 minute)	120 points
TOTAL	800 points

NOVICE

(4 team members)

Heel on 6' leash & Figure 8	160 points
Stand for examination	120 points
Heel free	160 points
Recall	120 points
Long sit (1 minute)	120 points
Long down (1 minute)	120 points
TOTAL	800 points

BRACE

PRE-NOVICE

(Couplers may not be shorter than 6 inches)

Heel on leash & Figure 8	50 points
Stand for examination	40 points
Recall	50 points
Long sit (1 minute)	30 points
Long down (1 minute)	30 points
TOTAL	200 points

NOVICE

(Couplers may not be shorter than 6 inches)

Heel free & Figure 8	40 points
Stand for Examination	30 points
Heel free	40 points
Recall	30 points
Long sit (1 minute)	30 points
Long down (1 minute)	30 points
TOTAL	200 points

AGILITY

Each course is worth 100 points.
 Penalties consist of the loss of 5 or 10 points.
 Qualifying score is 85 points.

RALLY

Timed course:

Novice	On leash	10-15 stations
Intermediate	On leash	12-17 stations
Advanced	Off leash	12-17 stations 1 Jump
Excellent	Off leash	15-20 stations 2 Jumps
Master	Off leash	15-20 stations 1 Jump

Each course is worth 100 points
 Qualifying score is 70 points

CLASSES AND SCORING

OBEDIENCE

PRE-BEGINNER NOVICE

(all work on leash)

Heel on leash & Figure 8	50 points
Sit for examination	40 points
Recall	50 points
Long sit (1 minute)	30 points
Long down (1 minutes)	30 points
TOTAL	200 points

PRE-NOVICE A & B

(all work on leash)

Heel on leash & Figure 8	50 points
Stand for examination	40 points
Recall	50 points
Long sit (1 minute)	30 points
Long down (1 minutes)	30 points
TOTAL	200 points

NOVICE A & B

Heel on leash & Figure 8	40 points
Stand for examination	30 points
Heel off leash	40 points
Recall	30 points
Long sit (1 minute)	30 points
Long down (1 minutes)	30 points
TOTAL	200 points

GRADUATE NOVICE

Heel on leash	30 points
Stand for examination	30 points
Heel free & Figure 8	40 points
Drop on recall	40 points
Long sits (3 minutes)	30 points
Long down (5 minutes)	30 points
TOTAL	200 points

PRE-OPEN

(all work off leash)

Heel free & Figure 8	40 points
Drop on recall	40 points
Retrieve on flat	30 points
Broad jump	30 points
Long sit (3 minutes)	30 points
Long down (5 minutes)	30 points
TOTAL	200 points

OPEN

(all work off leash)

Heel free & Figure 8	40 points
Drop on recall	30 points
Retrieve on flat	20 points
Retrieve over high jump	30 points
Broad jump	20 points
Long sit (3 minutes)	30 points
Long down (5 minutes)	30 points
TOTAL	200 points

PRE-UTILITY

(all work off leash)

Signal exercise	40 points
Retrieve over high jump	40 points
Directed retrieve	40 points
Directed jumping – high jump only	40 points
Moving stand & examination	40 points
TOTAL	200 points

UTILITY

(all work off leash)

Signal exercise	40 points
Scent discrimination: (choose 2 of Leather, Metal, or Wood)	
Article 1	30 points
Article 2	30 points
Directed retrieve	30 points
Directed jumping	40 points
Moving stand & examination	30 points
TOTAL	200 points

Qualifying Score= 170 (85%)

Times and Locations

OBEDIENCE, SHOWMANSHIP AND RALLY TRAINING SESSIONS

ANNOUNCEMENTS AT 6:10 PM !

First year Members:

Obedience Training - 6:15-7:00 p.m.

Showmanship Training 7:00-7:45 p.m.

All other Members:

Obedience Training 6:15-7:00

Rally or Showmanship 7:00-7:30

Rally or Showmanship 7:30-8:00.

AGILITY TRAINING SESSIONS

6-7pm Pre-novice

7-8pm Novice and above

All training sessions are held at the Sheboygan County Fair Grounds in Plymouth, Wisconsin.

Dog Project Board Meetings are held at the Extension Office at 7:15 PM.

April

2021

Sunday	Monday	Tuesday	Wednesday	Thursday	Friday	Saturday
OB= Obedience SHOW= Showmanship		20	21	22	23	24
25	26	27	28	29 MANDATORY In Person - turn in Health Forms (NO DOGS)	30	May 1 Setup Agility Ring

May

2021

Sunday	Monday	Tuesday	Wednesday	Thursday	Friday	Saturday
2	3	4 Agility	5	6 OB SHOW Rally	7	1/8
9 Mother's Day	10	11 Agility	12	13 OB SHOW Rally	14	15
16	17 Board Meeting	18 Agility	19	20 OB SHOW Rally	21	22
21	24	25 Agility	26	27 OB SHOW Rally	28	29
30	31 Memorial Day				OB= Obedience SHOW= Showmanship	

June

2021

Sunday	Monday	Tuesday	Wednesday	Thursday	Friday	Saturday
		1 Agility	2	3 OB SHOW Rally	4	5
6	7	8 Agility	9	10 OB SHOW Rally	11	12
13	14	15 Agility	16	17 OB SHOW Rally	18	19
20 Father's Day	21 Board Meeting	22 Agility	23	24 OB SHOW Rally	25	26
27	28	29 Agility	30		OB= Obedience SHOW= Showmanship	

July

2021

Sunday	Monday	Tuesday	Wednesday	Thursday	Friday	Saturday
OB= Obedience SHOW=Showmanship				1	2	3
4 Independence Day	5	6 Agility	7	8 OB SHOW Rally	9	10
11	12	13 Agility	14	15 OB SHOW Rally	16	17
18	19 Board Meeting	20 Agility	21	22 OB SHOW Rally	23	24
25	26	27 Agility	28	29 OB SHOW Rally	30	31

August

2021

Sunday	Monday	Tuesday	Wednesday	Thursday	Friday	Saturday
1	2	3 Agility	4	5 OB SHOW Rally	6	7
8	9 Board Meeting	10 Agility	11	12 OB SHOW Rally	13	14 County Show
15	16	17 Agility Show	18	19 Awards Night	20	21
22	23	24	25	26	27	28
29	30	31				
						OB= Obedience SHOW= Showmanship

September

2021

Sunday	Monday	Tuesday	Wednesday	Thursday	Friday	Saturday
			1	2 Sheboygan County Fair	3 Sheboygan County Fair	4 Sheboygan County Fair
5 Sheboygan County Fair Dog Demo	6 Sheboygan County Fair	7	8	9	10	11

2021 SHEBOYGAN COUNTY 4-H DOG COMMITTEE MEMBERS

ADULT LEADERS

BARB PERRONNE (2020/2021)

Chairperson

4021 County Hwy MM
Elkhart Lake, WI 53020
(920) 565-3760, (920) 207-3703 (cell)
bperronne@tds.net

SARAH BRITT -(2021)

Crier/Facebook

819 Beech Drive
Plymouth, WI 53073
(920) 226-9027
ozzy.britt@gmail.com

THERESA THEOBALD (2021/2022)

Treasurer

149 York Street
Sheboygan Falls, WI 53085
(920) 912-6229
gold41501@gmail.com

BECKY GARTMAN (2021/2022)

Show Coordinator

7630 Moenning Road
Sheboygan, WI 53081
(920)946-1966
cowdog888.bg@gmail.com

YOUTH LEADERS

CHLOE BREUNIG (2020/2021)

Co-Secretary

W2284 Cty Rd OK
Sheboygan Falls, WI 53085
(920) 476-9697
chloegoat@gmail.com

ALAYNA FLANIGAN (2021/2022)

1412 Coolidge Ct.
New Holstein, WI 53061
(920) 898-4015
amflanigan7@gmail.com

TANDIS DZWONKOWSKI (2021/2022)

Facebook Manager/Crier-

2923 Old Park Road
Sheboygan, WI 53081
(920) 889-7943
dzwonkowski@gmail.com

CHRIS CONTO (2020/2021)

Equipment Manager

N5589 County Rd ZZ
Plymouth, WI 53073
(920) 226-1712 (cell)
crconto@hotmail.com

EMILY HOLENTUNDER (2020/2021)

Co-Training Coordinator

337 North Street
Plymouth, WI 53073
(920) 946-8728
Emmers0407@gmail.com

TRISHA FLANIGAN (2021/2022)

Co-Training Coordinator

1412 Coolidge Ct.
New Holstein, WI 53061
(920) 898-4015
(920) 226-0286 (cell)
gflanigan@frontier.com

CAROLINE DANFORTH (2020/2021)

Co-Secretary

N6168 Chanda Court
Sheboygan Falls, WI 53085
(920) 467-1446
custombycandc@gmail.com

AUDREY GARTMAN (2021/2022)

7630 Moenning Road
Sheboygan, WI 53081
(920)946-1966
cowdog888.bg@gmail.com