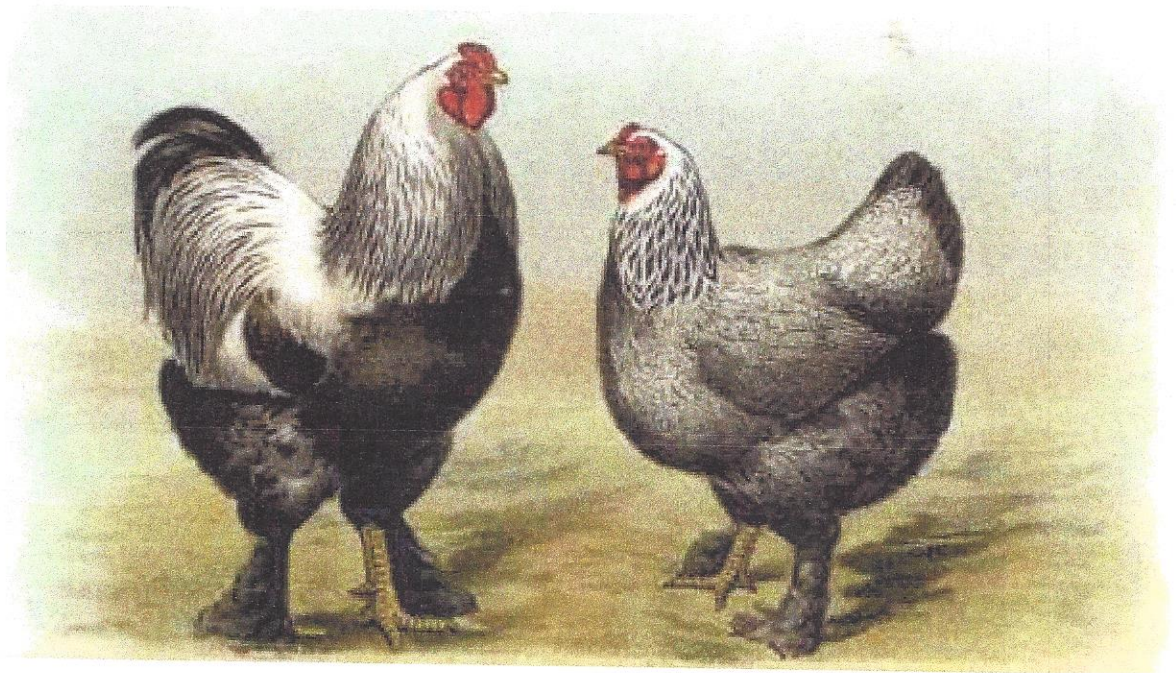
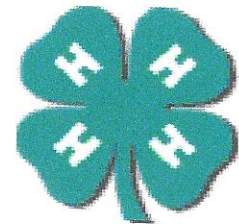


*Sheboygan County*

4H Poultry

Project



# Washing Chickens Before A Show

Written By Alan Stanford PH.D – [www.browneggblueegg.com](http://www.browneggblueegg.com)

Washing birds for a show is easy but takes good preparation and a lot of time. Do not get a bird wet until you have assembled everything you need. Of course, you need things to clean and dry your birds. You will also need a clean place to put your clean birds; don't put them into a dirty coop.

The most important part of washing birds is drying them. Birds are chilled and then get sick more easily than you might imagine. A light breeze on a hot day can be dangerous for a wet chicken. Have a good supply of towels. It takes at least one towel for each bird. You also need a hair dryer.

The second most important part of washing birds is to be gentle. If you are not gentle, you will break feathers; your feathered friend will be stressed when you wash, unless you are gentle. If you are gentle, birds learn to tolerate being washed and to love being blow-dried.

Wash your birds at least two days before the show. Your birds will preen their feathers into place and use their oil gland to restore their sheen. Keep the coops extra clean from just before you wash your birds to when you leave for the show.

## Get these before you wash a bird:

- A clean coop
- A warm draft free place to wash and dry your birds
- One towel for each bird
- A hair dryer
- Baby shampoo
- Toothbrush
- Cream rinse (optional)
- Laundry bluing if your birds have white feathers
- Glycerin
- Two tubs, one for washing, one for rinsing (a kitchen sink, laundry tub, or bathtub are good places to wash)

## Washing Your Birds

Use warm water. Don't chill or scald your birds.

Wet the entire bird before washing because dry feathers break much more easily than wet feathers. Get your bird wet with water and a little baby shampoo. Without a little shampoo, natural oils make the feathers difficult to get wet.

If you have a feather legged bird, do not pick the manure off the foot feathers. The feathers will break. After your bird has stood in water for 16 minutes you can rinse the manure off those foot feathers.

After the feathers are completely wet, put shampoo on them and gently work it into the feathers. Pay special attention to the feathers around the vent. Gently scrub your bird's feet with a



toothbrush. You can also stroke stained feathers with a toothbrush dipped in baby shampoo. Only stroke in one direction: from the base of the feather towards the tip.

Rinse your bird thoroughly with warm water. Be sure to rinse out all the shampoo. You can use conditioner, it helps rinse out the soap and conditions the feathers. Look for feathers that did not get clean. Add more shampoo and wash the problem areas.

## Final Rinse Solution

After rinsing out all the shampoo, you can give a final rinse in glycerin, bluing and warm water. Bluing makes white feathers appear whiter, you don't need bluing if your bird has no white feathers. You can buy glycerin at a drug store, sometimes you have to ask the pharmacist because they use glycerin to make lotions. If you add too much bluing, you will have a blue bird. I've seen quite a few. Here's the formula for the rinse water:

- Warm water (not hot, not cold)
- 2 ounces (4 tablespoons) glycerin per gallon of water
- 2 drops bluing per gallon of water

Dip your bird in the warm rinse water. Hold your bird a few seconds, while the water drains. Immediately wrap your bird in a towel; do not leave it uncovered, even on a hot day.

**Dry Your Bird Carefully and Thoroughly.** You must thoroughly dry your bird. Never leave a wet bird in even a slight breeze, even if it's a hot day.

Wrap your bird in a dry towel and place your bird in a draft free warm place. After 5 minutes, rewrap your bird in a dry section of the towel.

Blow-dry your bird with the hair dryer. Be **VERY** careful with the heat. I have seen birds with blistered chests caused by an enthusiastic novice. One good safeguard is to always have the palm side of your fingers between your bird and the dryer. My favorite hair drying has a "turbo" button that gives high-speed unheated air. I keep the drying set to medium (NEVER hot). I keep the turbo button pressed about 80% of the time.

If your birds are docile enough, you can line up 4 to 6 of them and blow-dry them together. I give each bird about 10 seconds and rotate around the group.

Wet feathers stay plastered to your bird's body. It helps if you gently lift the wet feathers and separate them while blow-drying. Remember to be gentle. You don't want to break feathers or stress your bird. Be sure your bird is completely dry. Don't let the warmth of the feathers fool you; your bird must be dry.

## Final Steps

Put your lean bird into a clean coop. Why not give your friends a little treat like chopped greens, a little grain, a section of winter squash, or that special treat you know they love. Keep the coop clean until you go to the show.

Enjoy the show. Talk to people about your birds and theirs. Corner the judge and learn from him. **Disagree alone. Learn in public!**

## Preparing for Showmanship

1. Choose a well-feathered, clean and tame bird.
2. Practice putting the bird into the cage and taking it out, head first. Make sure you are holding it correctly.
3. Work on identifying as many parts as you can on your bird.
4. Know your variety, breed, sex and class of your bird (bantam or large fowl also). Example: *I am holding a black Cochin bantam pullet. Or: I am holding a white Pekin drake.*
5. The breed of my bird is: \_\_\_\_\_.
6. The variety of my bird is: \_\_\_\_\_.
7. The sex of my bird is: \_\_\_\_\_.
8. Do you know a poultry disease? It's cure?
9. What is a disqualification or defect that may exist on a bird such as yours?
10. What is your bird's diet made up of?
11. Name a poultry parasite. Where do you look for them?
12. Your **ATTITUDE** and **APPEARANCE MATTER!** Dress in a long sleeved shirt. Be **POSITIVE!** Do your best.

## Entry Day Check List

1. **Entry Tags** - Pick up at fair office prior to entry day.
2. **Paperwork** – Health papers, signed sale agreement for Class O
3. **Feed** – Be sure to bring feed along for your birds
4. **Check In** – Stop at the table prior to putting your birds in cages. We will need your pullorium papers and sale contract if you are in the Blue Ribbon Sale. You can then put your birds in their cages and place the entry tag on the cage.



# Poultry Showmanship Score Sheet

<b>Name</b>	<input type="checkbox"/>	<b>BEG</b>
<b>Other</b>	<input type="checkbox"/>	<b>JNR</b>
	<input type="checkbox"/>	<b>INT</b>
	<input type="checkbox"/>	<b>SNR</b>

Appearance and attitude of Showperson		Scoring	Score
a)	Clean, conventional clothing	5	
b)	Follows instructions of judge. Keeps attention focused on bird and judge	5	
c)	Considerate of other exhibitors	5	

Appearance of Bird			
a)	Clean, unbroken feathers	5	
b)	Good body condition (correct size for age and breed)	10	
c)	An outward appearance of good health	10	
d)	Tame and manageable (obvious signs of training at home)	5	

Showmanship			
a)	Removing and returning bird to cage, carrying bird to judging table	10	
b)	Posing and presenting the bird to judge or transferring to another person	10	
c)	Display and examination of various parts: head, wings, body width, feet and legs, and abdominal cavity	10	

Knowledge of Poultry in general and specifically of breed exhibited (Each competitor should be asked at least two questions)			
a)	Give the breed, variety, and sex of your bird	5	
b)	What was the original purpose of this breed (eggs, meat, dual purpose or exhibition)?	5	
c)	How did you prepare your bird for this show?	5	
d)	Explain the type of feed you use.	5	
e)	Other	5	

<b>TOTAL</b>	<b>100</b>	
--------------	------------	--

Comments:





# Extension FactSheet

Veterinary Preventive Medicine, 1900 Coffey Rd., Columbus, OH 43210

## Common External Parasites in Poultry: Lice and Mites

**Carrie L. Pickworth**

Avian Disease Investigation Laboratory  
Department of Veterinary Preventive Medicine  
The Ohio State University

**Teresa Y. Morishita**

Extension Poultry Veterinarian  
Ohio State University Extension

Parasites can be detected on the external surfaces of the body by way of a thorough physical examination. Periodical examination of the flock can help to detect an early infestation and can help to prevent a larger flock outbreak. It is important to detect infestations early because of the restrictions on treatments available for food-producing birds. Moreover, many of the parasites have an environmental component so treating the environment is also necessary for controlling infestations. Prevention and early detection are the keys to successful treatment and control of external parasites in poultry flocks. The most common external parasites seen in poultry are lice and mites.

### Poultry Lice

Poultry lice are tiny, wingless, 6-legged, flat-bodied, insects with broad, round heads. They lay their eggs on the host bird's feathers, especially near the base of the feather shaft (Figure 1). A female louse will lay 50 to 300 eggs at a time, which she cements to the feather shaft. There are several species of lice that affect poultry, and multiple species can affect a bird at any given time. Some species can be localized on specific locations like the quill lice; or others can be found over most of the body surface like the chicken body lice. The lice found on poultry do not suck blood as the lice found in other species of animals; rather they feed on dry skin scales, feathers, and scabs. However, they will ingest blood extruding from irritated skin. The entire life cycle of the lice occurs on the host bird, primarily in the feathers. Poultry lice are host specific and cannot be transferred to humans.

Fall and winter are the most common times to observe lice infestations. Inspect the ventral region of the bird for live lice crawling on the bird and for nits (lice eggs) as most infestations start in this area of the bird's body. Eggs are white and commonly appear in bunches on the lower feather shaft. Feathers of infested birds may have a moth-eaten appearance. Due to the feather damage, the bird may have a dull or roughened appearance.

### Poultry Mites

There are two major types of mites found on the body of poultry. They are the Northern Fowl Mite (or in tropical environ-

ments, the Tropical Fowl Mite) and the Chicken Mite (or Red Roost Mite).

The Northern Fowl Mite is the most common external parasite in poultry, especially in cool weather climates. It sucks blood from all different types of fowl and can live in the temperate regions of the world. As compared to the Chicken Mite, the Northern Fowl Mite primarily remains on the host for its entire life cycle. These mites can live off the host bird for 2 to 3 weeks. These mites are small and black or brown in color, have 8 legs, and are commonly spread through bird-to-bird contact. The Tropical Fowl Mite is comparable to the Northern Fowl Mite but lives in the tropical regions.

The Chicken Mite is a nocturnal mite that is primarily a warm weather pest. These mites suck the blood from the birds at night



Figure 1. Lice eggs at the base of the feather shaft



and then hide in the cracks and crevices of the houses during the day. Chicken Mites are dark brown or black, much like the Northern Fowl Mite.

The life cycle of mites can be as little as 10 days, which allows for a quick turnover and heavy infestations. Mites can be transferred between flocks by crates, clothing, and wild birds. Mites are capable of living in the environment and off the host bird for a period of time. Diagnoses of mite infestations are similar to that of lice; however since mites can live off the bird and some are nocturnal, inspect birds and housing facilities at night especially if you suspect that the Chicken Mite is the cause of the infestation. Observable signs may include darkening of the feathers on white feathered birds due to mite feces; scabbing of the skin near the vent; mite eggs on the fluff feathers and along the feather shaft (Figure 2); or congregations of mites around the vent, ventral abdomen, tail, or throat. Since mites congregate around the ventral region, they can also reduce a rooster's ability of successful matings.

## Flock Symptoms

Flocks infested with lice or mites show similar general symptoms. Birds will have decreased egg production; decreased weight gain; decreased carcass-grading quality; increased disease sus-



Figure 2. Mites and eggs along the feather shaft.

ceptibility; and decreased food intake. If any of these generalized symptoms are observed, a visual evaluation is recommended. Inspect birds around the ventral region for signs of lice or mites since infestations usually start in this area of the bird.

## Treatments

Sanitation and cleanliness are the keys to lice and mite control. Sanitation includes cleaning and disinfecting housing facilities and equipment between flocks. Moreover, reducing people traffic through housing facilities is recommended. Eliminating the contact between flocks and wild birds can reduce the potential transfer of external parasites. Chemical control can include the use of carbaryl (Sevin®). Treat the walls, floors, roosts, nest boxes, and the birds simultaneously. When dusting an entire house, be careful to avoid feed contamination. One treatment method for small flocks or individual birds is the use of a dusting bath with Sevin®. Place the bird into a garbage bag containing the medicated powder with the birds' head out and rotate/shake the bag to completely cover the bird with powder. Be sure not to inhale the medicated powder during treatments. The use of a facial mask is recommended to prevent inhaling this medicated powder. Because the life cycle of lice and mites is approximately 2 weeks, treatments should be repeated every 2 weeks as needed. Carefully read all labels prior to treatment to make sure withdrawal times are followed for food-producing poultry. Severe lice or mite infestations can be treated initially with a kitten strength dose of a pyrethrin-based medicated spray on the birds to reduce the initial numbers. If problems persist, contact a veterinarian for treatment with such medications as Ivermectin®. Prevention is the best method of treatment. For poultry used in exhibition or for new poultry entering the flock, a minimum quarantine period of 2 weeks is recommended. During this time birds should be physically examined and treated if necessary.

Table 1. Comparison chart to distinguish between lice and mites.

	Lice	Mites
<b>Size</b>	2-3 millimeters long	1 millimeter diameter (ground pepper)
<b>Speed</b>	Fast-moving	Slow-moving
<b>Color</b>	Straw-colored (light brown)	Dark reddish black
<b>Egg location</b>	Base of feather shaft	Along feather shaft
<b>Egg color</b>	White	White or off-white
<b>Best detection time</b>	Daytime	Nighttime or Daytime
<b>Location</b>	Lives only on host	Lives on host and in environment

Visit Ohio State University Extension's web site "Ohioline" at: <http://ohioline.osu.edu>

All educational programs conducted by Ohio State University Extension are available to clientele on a nondiscriminatory basis without regard to race, color, creed, religion, sexual orientation, national origin, gender, age, disability or Vietnam-era veteran status.

Keith L. Smith, Associate Vice President for Agricultural Administration and Director, OSU Extension

TDD No. 800-589-8292 (Ohio only) or 614-292-1868

7/03-des



# EXTERNAL SYMPTOMS FOR DIAGNOSING POULTRY DISEASES

---

## BODY

<u>Symptom</u>	<u>Possible Cause</u>
Emaciation...	Off-feed; nutritional deficiencies; <a href="#">lymphoid leukosis</a> ; <a href="#">enteritis</a> ; gizzard impaction; tuberculosis; unknown
Stunted, uneven growth....	Gizzard impaction; bluecomb disease; <a href="#">alfatoxin poisoning</a> ; synovitis; <a href="#">contaminated hatching egg</a>
Swellings...	Ruptured air sac; edema
Twitching, muscular spasm...	<a href="#">Botulism</a> ; <a href="#">infectious bursal disease</a>
Trembling...	Epidemic tremors; encephalitis (brain damage)
Paralysis...	<a href="#">Botulism</a> ; <a href="#">Marek's disease</a> ; arthritis; <a href="#">aflatoxin poisoning</a> ; epidemic tremor
Dehydration...	Acute lack of water; <a href="#">coccidiosis</a> ; <a href="#">infectious bursal disease</a> ; nutritional imbalance-dietary salts
Nervousness...	Hysteria; drug intoxication; <a href="#">Newcastle</a> ; fungus infection
Lying on breast, legs paralyzed...	Algae poisoning; acute lack of water; yellow jasmine poisoning; <a href="#">botulism</a> ; drug toxicity

---

## FEATHERS

<u>Symptom</u>	<u>Possible Cause</u>
Moist under wing...	<a href="#">Infectious coryza</a>
Loss of...	Molting
Deposits at base of shafts...	<a href="#">Lice</a> or <a href="#">mite</a> eggs
Soiled hackle feathers...	<a href="#">Infectious coryza</a> , eye infection
Feathers picked...	<a href="#">Lice</a> ; nutritional deficiency-methionine; birds not debeaked
Depigmented...	Nutritional deficiencies-lysine, iron or folic acid
Broken on upper thigh...	Self picking
Feather eating...	Nutritional deficiency-methionine

---



## Skin

<u>Symptom</u>	<u>Possible Cause</u>
Pigmentation excessive ...	Poor production; high pigment intake
Nodules, mainly legs...	<a href="#">Marek's disease</a>
Nodules over vent...	Flukes (rare)
Moist, necrotic, edematous...	Necrotic dermatitis, exudative diathesis
Darkened, purplish...	<a href="#">Erysipelas</a> ; <a href="#">fowl cholera</a>
Crusted areas...	<a href="#">Erysipelas</a> ; scab; gangrenous dermatitis
Scabby hip...	Self picking, inflicted by other birds
Gangrenous, green...	Hemorrhage; arthritis; gangrenous dermatitis
Vent irritated...	<a href="#">Northern fowl mite</a> ; <a href="#">lice</a> (occasionally)
Pale...	Anemia; nutritional deficiencies-iron, copper, or vitamin B <sub>12</sub>

## Head

<u>Symptom</u>	<u>Possible Cause</u>
Swollen, puffy...	Ruptured air sac; <a href="#">infectious coryza</a> ; injury; <a href="#">Newcastle disease</a>

## Comb

<u>Symptom</u>	<u>Possible Cause</u>
Mottled, red and white margins...	Frozen
Eruptions, nodules...	<a href="#">Fowl pox</a>
White, scaly, powdery...	Favus

## Eyes

<u>Symptom</u>	<u>Possible Cause</u>
Watery...	<a href="#">Infectious coryza</a>
Blindness...	<a href="#">Fowl pox</a> ; <a href="#">aspergillosis</a> ; Arizona paracolon; paratyphoid
Watery, red, inflamed, closed...	Laryngotracheitis; ammonia burn; <a href="#">Newcastle disease</a> ; nutritional deficiency-vitamin A
Cataracts...	Epidemic tremor
Crusts on eye lids...	Nutritional deficiency-vitamin A; <a href="#">fowl pox</a>
Pupil irregular, blindness...	<a href="#">Marek's disease</a>
Blood in eye...	Hemorrhagic anemia
Large, swollen...	<a href="#">Mycoplasma infection</a>

## Face

<u>Symptom</u>	<u>Possible Cause</u>
----------------	-----------------------

Swollen...	<a href="#">Infectious coryza</a> ; <a href="#">Newcastle disease</a> ; nutritional deficiency-vitamin A; <a href="#">E. coli</a>
Darkened, purplish...	<a href="#">Erysipelas</a> ; <a href="#">fowl cholera</a> ; septicemia; injury
Nodules...	<a href="#">Fowl pox</a>

## Nostrils

<u>Symptom</u>	<u>Possible Cause</u>
Discharge...	<a href="#">Infectious coryza</a> ; chronic respiratory disease; <a href="#">infectious bronchitis</a> ; influenza

## Mouth

<u>Symptom</u>	<u>Possible Cause</u>
Pustules...	Nutritional deficiency-vitamin A
Crusts at margins...	Nutritional deficiencies-pantothenic acid or biotin
Beak soft, rubbery...	Nutritional deficiencies-vitamin D or calcium-phosphorus imbalances
White coat over tongue and in mouth...	Wet form of <a href="#">fowl pox</a>
Ulcers...	<a href="#">Mycotoxins</a> ; chemical injury

## Wattles

<u>Symptom</u>	<u>Possible Cause</u>
Swollen, bulbous...	<a href="#">Infectious coryza</a> ; <a href="#">fowl cholera</a>
Nodules...	<a href="#">Fowl pox</a>

## Neck

<u>Symptom</u>	<u>Possible Cause</u>
Paralysis (limber neck)...	<a href="#">Botulism</a> ; yellow jasmine poisoning
Twisting...	<a href="#">Newcastle disease</a> ; <a href="#">fowl cholera</a> ; brain infection; improper injection of Marek's vaccine
Retracted over back...	<a href="#">Newcastle disease</a> ; nutritional deficiency-thiamin
Retracted under breast...	Nutritional deficiency-vitamin E; <a href="#">Newcastle disease</a>
Scabby necrotic areas...	Improper injection of drugs; other injury

## Legs

<u>Symptom</u>	<u>Possible Cause</u>
Paralysis...	<a href="#">Marek's disease</a> ; <a href="#">botulism</a> ; heat stroke; epidemic tremor; cage layer fatigue; vitamin E deficiency; algae poisoning; yellow jasmine



<b>Rough, scaly...</b>	poisoning; acute lack of water <a href="#">Fowl pox</a> ; <a href="#">scaly leg mite</a>
<b>Bowed, weak...</b>	Nutritional deficiency-vitamin D; osteodystrophy
<b>Bone bends...</b>	Nutritional deficiency-vitamin D
<b>Joint swelling...</b>	Infectious synovitis; paratyphoid; <a href="#">pullorum</a> ; zinc deficiency; staphylococcosis; tenosynovitis; arthritis
<b>Tendon at hock displaced...</b>	Perosis (nutritional deficiency-manganese or choline)
<b>Stilted gait...</b>	Tenosynovitis
<b>Shank depigmented...</b>	Nutritional deficiency-vitamin A; <a href="#">coccidiosis</a> ; any low grade slow disease (for any length of time)
<b>Toes twisted...</b>	Genetic

## Feet

<u>Symptom</u>	<u>Possible Cause</u>
<b>Joints fixed...</b>	Tenosynovitis
<b>Swollen foot pad...</b>	Infectious synovitis; bumblefoot
<b>Toes curled...</b>	Nutritional deficiency-riboflavin; genetic; management deficiency
<b>Foot pad cracked, dermatitis...</b>	Nutritional deficiency-biotin or pantothenic acid; management deficiency
<b>Bird walks on toes...</b>	Tenosynovitis
<b>Toes twisted...</b>	Genetic

## Droppings

<u>Symptom</u>	<u>Possible Cause</u>
<b>Profuse...</b>	<a href="#">Enteritis</a> ; excess roughage in diet
<b>Bloody...</b>	<a href="#">Cecal coccidiosis</a> ; <a href="#">Newcastle disease</a>
<b>Green...</b>	Feed intake low; bile not diluted
<b>Sulfur yellow...</b>	<a href="#">Blackhead</a>
<b>Light yellow or yellowish-green...</b>	Fowl typhoid; <a href="#">fowl cholera</a>
<b>Foamy...</b>	Intestinal parasites (protozoa)

## Egg Production

<u>Symptom</u>	<u>Possible Cause</u>
<b>Sudden severe drop ...</b>	<a href="#">Newcastle disease</a> ; <a href="#">infectious bronchitis</a> ; laryngotracheitis; influenza-A, <a href="#">mycotoxin</a> , mismanagement (no lights, feed, or water)
<b>Unsatisfactory...</b>	<a href="#">Infectious coryza</a> ; <a href="#">fowl cholera</a> ; chronic respiratory diseases; diet deficiencies; gizzard impaction; <a href="#">fowl pox</a> ; hepatitis; <a href="#">lice</a> ; <a href="#">mites</a> ;

Egg wrinkled, depigmented...	<a href="#">ascarids</a> ; <a href="#">capillaria</a> ; <a href="#">lymphoid leukosis</a> ; <a href="#">coccidiosis</a> ; <a href="#">enteritis</a> ; <a href="#">pullorum</a> ; fowl typhoid; <a href="#">aflatoxicosis</a> ; adenovirus infection; toxins
Production pause...	Necrotic enteritis; <a href="#">infectious bronchitis</a>
Poor shell quality...	<a href="#">Newcastle disease</a> ; <a href="#">infectious bronchitis</a> ; adenovirus infection; diet deficiency; <a href="#">T-2 fusariotoxin</a>

---

## Death

<u>Symptom</u>	<u>Possible Cause</u>
Instant, few or no prior signs...	Aortic rupture; acute lack of water; <a href="#">fowl cholera</a> ; overheated, <a href="#">fatty liver hemorrhagic syndrome</a>
High mortality-producing diseases...	<a href="#">Fowl cholera</a> ; <a href="#">erysipelas</a> ; <a href="#">exotic Newcastle disease</a> ; <a href="#">acute coccidiosis</a> ; <a href="#">aflatoxin</a> ; <a href="#">botulism</a> ; poison; <a href="#">fatty liver hemorrhagic syndrome</a>

---

### Mississippi State University

For information about this page, contact [Sharon Whitmarsh](#).  
For information about Mississippi State University, contact [msuinfo@ur.msstate.edu](mailto:msuinfo@ur.msstate.edu).

URL: <http://www.msstate.edu/dept/poultry/diagext.htm>



***Following Nutritional Information provided by Kettle Lakes Cooperative***

**Tips for Caring for Chicks**

- Provide warm, dry housing without drafts (such as a cardboard box). Line bottom with newspaper and wood shavings if desired (2-5" deep).
  - Keep day old chicks at 90-95 degrees F. Use a heat lamp approximately 20" above the chicks. Place a thermometer at chick level. If chicks huddle under the light; it's too cold. If chicks huddle in corners, it's too hot. Reduce 5 degrees F each week until a minimum of 65 degrees F.
  - Space Requirements for Chicks:
    - Hatch to 6 weeks-0.8 to 1.0 ft<sup>2</sup> per chick
    - 6 weeks and older-1.0 to 2.0 ft<sup>2</sup> per chick
  - Space Requirement for Mature Turkeys:
    - 4.0 to 5.0 ft<sup>2</sup>
  - Space Requirement for Layers
    - 2.5 to 3.5 ft<sup>2</sup>
  - Provide nesting boxes for birds by 18-20 weeks of age.
  - Provide fresh, cool (not cold!) water at all times. Dip each chick's beak in the water to encourage drinking.
  - Keep feeders full at all times; be sure feed is dry and mold free. Clean feeders on a regular basis. Provide 1 foot of feeder space for every 25 chicks. Provide 3 feet of feeder space for 25 adult chickens, ducks and geese. Provide 8.5 feet of feeder space for 25 adult turkeys.
  - Feed Recommendations:
    - Egg Laying Chicks-Feed Start & Grow MP or HG Duck, Goose & Chick Grower until 18-20 weeks of age. At that time switch to Layerena.
    - Broiler Chicks (meat)-Feed Start & Grow MP from start to finish.
    - Ducks/Geese: Feed Flock Raiser or HG Duck, Goose & Chick Grower from hatch on. These birds DO NOT need medication.
    - Turkeys: Feed HG Turkey/Pheasant Starter 30% AMP up to 8 weeks of age. Switch to Purina Turkey Grower from 8 weeks to finish.
- Medicated feeds are generally recommended for chickens and turkeys for coccidiosis control.**

\*Check out [www.purinasunfreshrecipe.com](http://www.purinasunfreshrecipe.com) for more information.

### Feeding Your Birds

- Water is the most important nutrient!!!
- Lack of water decreases feed intake.
- Water is a major component of blood, it removes waste products, carries nutrients, cools the body.
- Water intake should be 2 times the feed intake amount.



### Nutrients



- Carbohydrates
  - Make up the biggest share of the poultry diet.
  - CHO's provide energy in the form of starch.
- Fats
  - Highest energy feeds-2.25 times the energy in CHO's.
  - Addition of fat increases the palatability and physical consistency of feed.

### Nutrients

- Proteins
  - Made up of amino acid chains.
  - Proteins make up body tissues.
  - Protein quality and source are important.
- Minerals & Vitamins
  - Often added to grains to balance ration.
  - The right balance is required for vitamins and minerals to be effective.

### Nutrients

- Vitamins
  - Vit. A--digestive, reproductive, respiratory tract
  - Vit. D--Bone formation, Ca & P metabolism
  - B Vit.--Energy Metabolism
- Minerals
  - Eggshell, bones, blood cell formation

### Selecting Feed

- A balanced ration is the key!
- Know what type of bird you are raising.
  - Finisher/Layer
  - Age of Bird
  - Kind of Bird
- Change the feed depending on growth stage.



### Selecting Feed

- Feed is an investment!!!
  - 70% of the cost of poultry production is feed.
  - Cheapest is not best--you get what you pay for!
- Purchase feed from a reputable dealer.
- Keep feed cool and dry to maintain freshness.



### Selecting Feed

- The better the nutrition provided, the more likely an animal will meet its genetic potential.
- An animal's confirmation is influenced 90% by genetics and 10% by nutrition.



### KLC Poultry Program

- Meat Birds (Broilers)
  - Feed Purina Start & Grow from Day 1 to 4 weeks
  - Feed Purina Start & Grow or Flock Raiser from 4 weeks to market.



### KLC Poultry Program

- Layer Birds
  - Purina Start & Grow from day 1-week 18
  - Purina Layena from 18 weeks on



### Ducks & Geese

- Day 1 to market-Honor Duck, Goose, & Chick Starter/Grower
- Or....
- Purina Flock Raiser Pellet NonMed



### Turkeys

- Honor Turkey/Pheasant Starter—Day 1 to 8 weeks
- Purina Turkey Grower—8 weeks to market





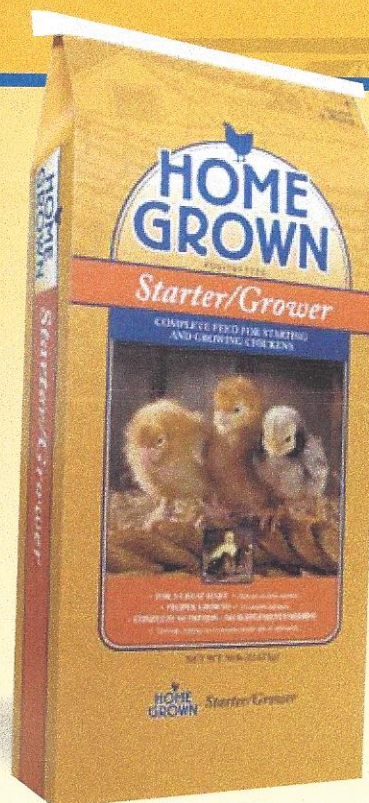
# HOME GROWN™

POULTRYFEED

## Meat Bird Starter/Grower 23% Amp .0175%

Home Grown™ Meat Bird Starter/Grower 23% AMP .0175% is a versatile complete feed suitable for growing broiler type chickens, capon, and roasters. It is also a great complete feed for turkeys beyond eight weeks of age. This product can be followed by Home Grown™ 20% Starter/Grower in an efficient feeding program.

From starting chicks to growing market birds and laying hens, you can trust Home Grown™ poultry feeds to provide proper nutrition for the overall health of your flock. We want to play a vital role in your flock's well-being at every life stage. With Home Grown™ poultry feeds, your flock's nutrition is our top priority.



E1: 15256 - Bag  
15257 - Bulk

### FEATURES

- Contains proper levels of energy, protein (amino acids), vitamins, and minerals
- Versatile
- Complete feed
- Crumble form
- Contains medication Amprolium - .0175%

### BENEFITS

- Ideal ration for broilers (meat type) chickens. May be fed from day one to market.
- May be used in production of turkeys and pheasants for meat.
- No mixing required.
- Improved growth, feed utilization, and reduced waste. Works best in self feeders.
- Aids in the prevention of coccidiosis.

### GUARANTEED ANALYSIS

Crude Protein, min. ....	23.0%
Lysine, min. ....	1.20%
Methionine, min. ....	0.50%
Crude Fat, min. ....	4.0%
Crude Fiber, max. ....	3.5%
Calcium (Ca), min. ....	0.9%
Calcium (Ca), max. ....	1.4%
Phosphorus (P), min. ....	0.75%
Salt (NaCl), min. ....	0.25%
Salt (NaCl), max. ....	0.75%

ACTIVE DRUG INGREDIENT  
Amprolium ..... 0.0175%

### FEEDING DIRECTIONS

**BROILER CHICKENS:** Feed HOME GROWN™ STARTER/GROWER 23% AMP .0175% to chickens as the sole ration continuously from 1 day of age until 3 weeks of age (21 days). At 3 weeks of age (22 days), change to HOME GROWN™ STARTER/GROWER 20%. Alternatively HOME GROWN™ STARTER/GROWER 23% AMP .0175% may be fed to broiler chickens as the sole ration from day-old until market. Provide fresh clean water at all times.

**TURKEYS/PHEASANTS:** HOME GROWN™ STARTER/GROWER 23% AMP .0175% is the second feed in a three-feed program to grow meat turkeys and pheasants to market or maturity; viz., HOME GROWN™ TURKEY/PHEASANT STARTER 30% (0-8 wks.), HOME GROWN™ STARTER/GROWER 23% (8-12 wks.), HOME GROWN™ STARTER/GROWER 20 (16-20 wks.). Provide fresh, clean water at all times.

For more information about this product or any of our family of Home Grown™ products, please contact 1-800-311-1726.  
Manufactured by Country Acres Feed Company • P.O. Box 19856 • Brentwood, MO 63144

PMHG08P2046



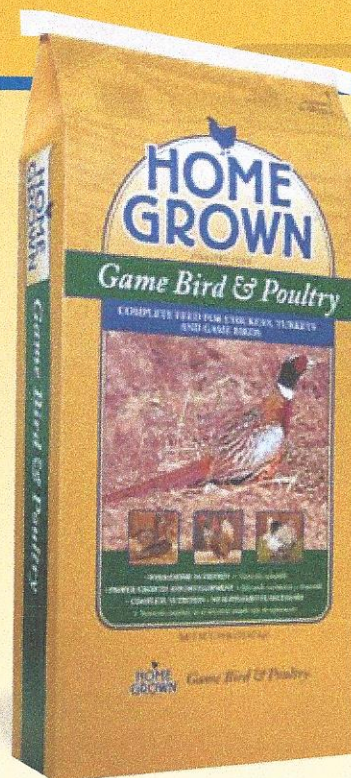
# HOME GROWN™

POULTRYFEED

## Finisher 20%

*Home Grown™ Finisher 20% is a versatile complete feed suitable for finishing meat-type broiler chickens, turkeys and pheasants. It is also a great complete feed for starting future laying chickens.*

*From starting chicks to growing market birds and laying hens, you can trust Home Grown™ poultry feeds to provide proper nutrition for the overall health of your flock. We want to play a vital role in your flock's well-being at every life stage. With Home Grown™ poultry feeds, your flock's nutrition is our top priority.*



E1: 15215 - Amp-Med - Bulk  
15216 - Non-Med - Crumble  
15214 - Amp .0175 - Crumble

### FEATURES

- Contains proper levels of energy, protein (amino acids), vitamins, and minerals
- Versatile formula
- Nutritionally complete feed
- Crumble form
- Medication Option – Amprolium .0175%

### BENEFITS

- Ideal growing /finishing ration for broilers, (meat-type chickens). Start feeding at 3 weeks of age.
- May be used in production of turkeys and pheasants for meat. May also be fed from day one to five weeks as a starting feed for layer type chickens.
- No supplementation required.
- Improved growth, feed utilization, and reduced feed waste. Works best in self-feeders.
- Aids in the prevention of coccidiosis.

### GUARANTEED ANALYSIS

Crude Protein, min.....	20.0%
Lysine, min.....	.095%
Methionine, min.....	0.35%
Crude Fat, min.....	4.0%
Crude Fiber, max.....	3.5%
Calcium (Ca), min.....	.075%
Calcium (Ca), max.....	1.25%
Phosphorus (P), min.....	0.60%
Salt (NaCl), min.....	0.25%
Salt (NaCl), max.....	0.75%

#### ACTIVE DRUG INGREDIENT

Amprolium.....	0.0175%
----------------	---------

### FEEDING DIRECTIONS

**BROILER CHICKENS:** Feed HOME GROWN™ FINISHER 20% to chickens as the sole ration continuously from 3 weeks of age (22 days) until market.

**TURKEYS:** HOME GROWN™ FINISHER 20% is the third feed in a three-feed program to grow turkeys to maturity; viz., HOME GROWN™ TURKEY/PHEASANT STARTER 30% (0-8 wks.), HOME GROWN™ STARTER/GROWER 23% (8-12 wks.), HOME GROWN™ FINISHER 20% (12-16 wks.).

**PHEASANTS:** HOME GROWN™ FINISHER 20% is the third feed in a three-feed program to grow pheasants for meat; viz., HOME GROWN™ TURKEY/PHEASANT STARTER 30% (0-8 wks.) HOME GROWN™ STARTER/GROWER 23% (8-12 wks.) and HOME GROWN™ FINISHER 20% (12-16 wks.)

*For more information about this product or any of our family of Home Grown™ products, please contact 1-800-311-1726.  
Manufactured by Country Acres Feed Company • P.O. Box 19856 • Brentwood, MO 63144*

PMHG08P2058



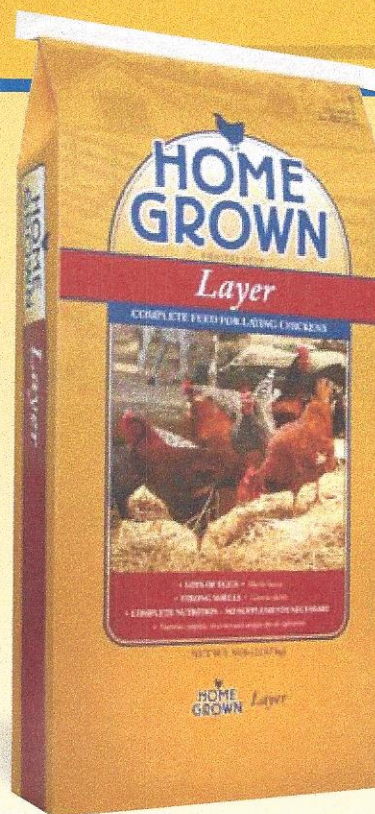
# HOME GROWN™

POULTRY FEED

## Layer 18%

*Home Grown™ Layer 18% is a versatile complete feed suitable for laying chickens, ducks and geese. Home Grown™ Layer 18% will help your birds produce lots of eggs with strong shells.*

*From starting chicks to growing market birds and laying hens, you can trust Home Grown™ poultry feeds to provide proper nutrition for the overall health of your flock. We want to play a vital role in your flock's well-being at every life stage. With Home Grown™ poultry feeds, your flock's nutrition is our top priority.*



E1: 15237 - Crumble  
15239 - Pellet  
15238 - Crumble Bulk

### FEATURES

- Specifically formulated for laying chickens. Contains proper levels of energy, protein (amino acids), vitamins and minerals
- Contains proper level of calcium
- Available in either pellet or crumble form

### BENEFITS

- Lots of eggs.
- Strong shells.
- For production of sound eggshells. No additional calcium supplement is required.
- No supplementation required.

### GUARANTEED ANALYSIS

Crude Protein, min .....	18.0%
Lysine, min .....	0.95%
Methionine, min .....	0.32%
Crude Fat, min .....	2.5%
Crude Fiber, max.....	5.5%
Calcium (Ca), min.....	3.7%
Calcium (Ca), max.....	4.7%
Phosphorus (P), min .....	0.55%
Salt (NaCl), min .....	0.10%
Salt (NaCl), max .....	0.60%

### FEEDING DIRECTIONS

Feed as the sole ration to laying hens from onset of egg production (chickens: 18-20 weeks of age, ducks: 20-24 weeks of age). May be used during the entire production cycle. Do not provide additional grain or free-choice calcium source.

Provide fresh, clean water at all times.



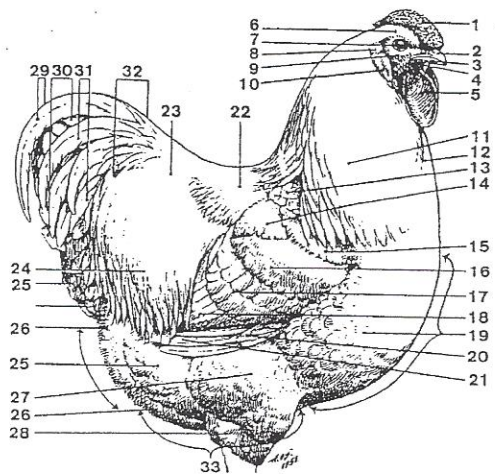


Figure 3  
NOMENCLATURE OF MALE

- |                               |                             |
|-------------------------------|-----------------------------|
| 1. Comb                       | 18. Secondaries of Wing Bay |
| 2. Upper Mandible or Beak     | 19. Breast                  |
| 3. Lower Mandible or Beak     | 20. Primary Coverts         |
| 4. Throat                     | 21. Primaries               |
| 5. Wattle                     | 22. Back                    |
| 6. Skull                      | 23. Upper Saddle            |
| 7. Eye                        | 24. Lower Saddle            |
| 8. Ear                        | 25. Rear Body Feathers      |
| 9. Face                       | 26. Fluff or Stern          |
| 10. Ear-lobe                  | 27. Lower Thigh Feathers    |
| 11. Hackle                    | 28. Hock Plumage            |
| 12. Front of Neck Plumage     | 29. Main Suckles            |
| 13. Cape                      | 30. Mail Tail               |
| 14. Shoulder                  | 31. Lesser Suckles          |
| 15. Wing Front                | 32. Tail Coverts            |
| 16. Wing Bow                  | 33. Abdomen                 |
| 17. Wing Coverts or Wing Bars |                             |

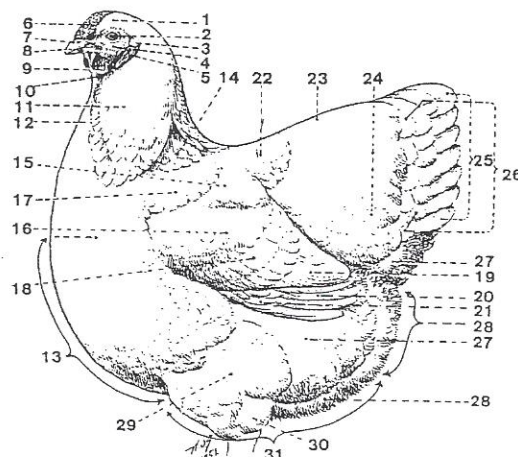
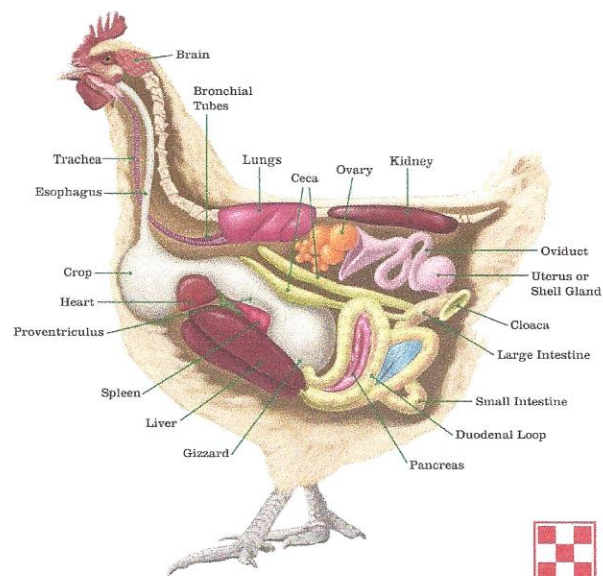


Figure 4  
NOMENCLATURE OF FEMALE

- |                           |                             |
|---------------------------|-----------------------------|
| 1. Skull                  | 17. Wing Front              |
| 2. Eye                    | 18. Wing Covert or Wing Bar |
| 3. Ear                    | 19. Secondaries or Wing Bay |
| 4. Face                   | 20. Primaries               |
| 5. Ear-lobe               | 21. Primary Coverts         |
| 6. Comb                   | 22. Back                    |
| 7. Nostril                | 23. Sweep of back           |
| 8. Beak                   | 24. Cushion                 |
| 9. Wattle                 | 25. Main Tail               |
| 10. Throat                | 26. Tail Coverts            |
| 11. Hackle                | 27. Rear Body Feathers      |
| 12. Front of Neck Plumage | 28. Fluff or Stern          |
| 13. Breast                | 29. Lower Thigh Plumage     |
| 14. Cape                  | 30. Hock Plumage            |
| 15. Shoulder              | 31. Abdomen                 |
| 16. Wing Bow              |                             |



# NOMENCLATURE OF SHANKS AND TOES

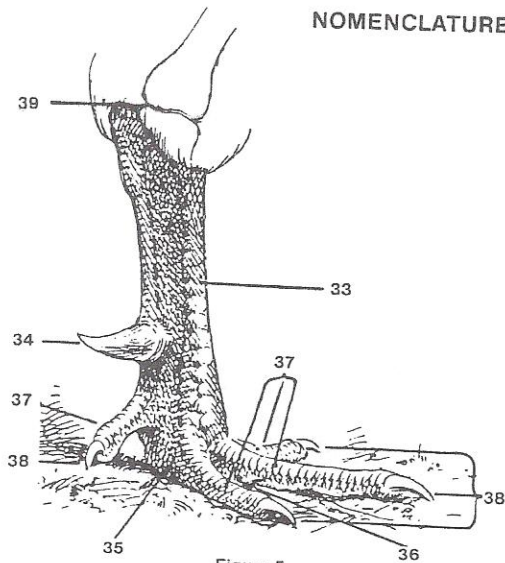


Figure 5

MALE

- 33. Shank
- 34. Spur
- 35. Foot
- 36. Web
- 37-37. Toes
- 38-38. Toe-Nails
- 39. Middle of Hock Joint

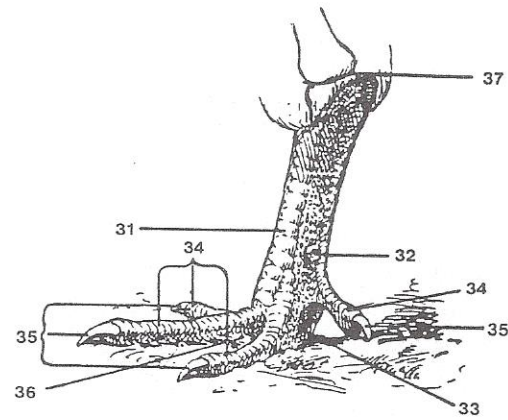


Figure 6

FEMALE

- 31. Shank
- 32. Spur
- 33. Foot
- 34-34 Toes
- 35-35. Toe-Nails
- 36. Web
- 37. Middle of Hock Joint

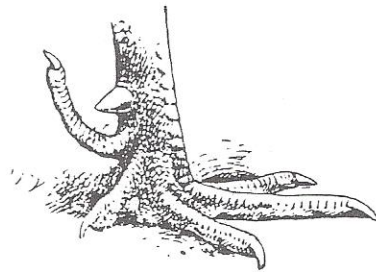


Figure 7

Illustration showing fifth toe in five-toe breeds.

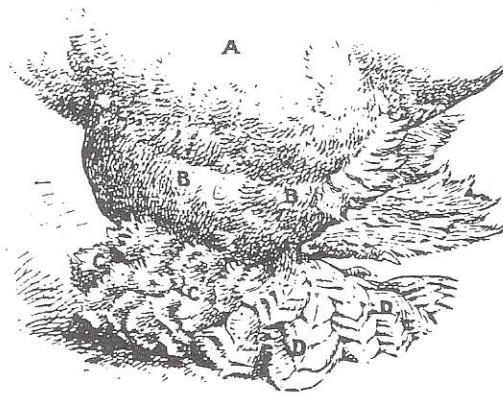


Figure 8

Cochin Leg and Toe Feathering.

- A, Upper Thigh;
- B-B Lower Thigh;
- C-C, Shank;
- D-D, Toe.

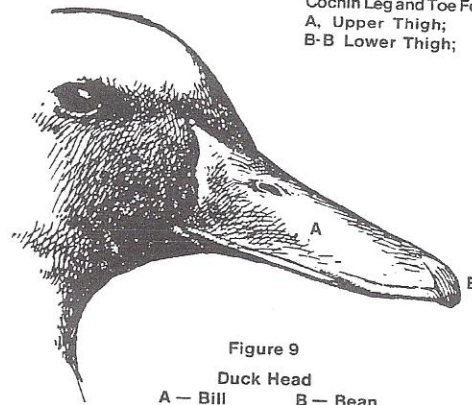


Figure 9

Duck Head

- A — Bill
- B — Beak



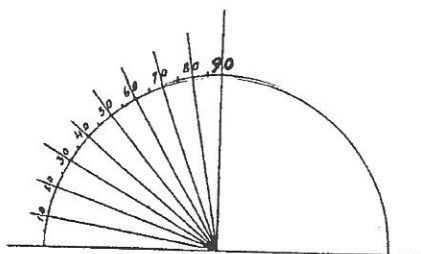


Figure 10  
Diagram Showing Degrees  
above Horizontal

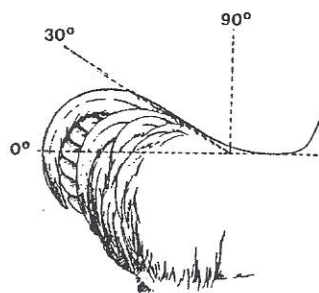


Figure 11  
Measuring Tail Angles

#### DIFFERENT TYPES OF STANDARD MALE COMBS

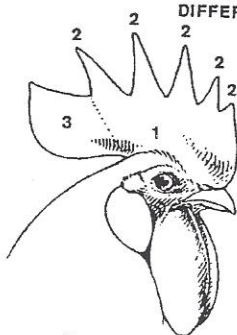


Figure 12  
Single Comb  
1, Base; 2, Point; 3, Blade.  
For ideal types see illustrations  
of breeds and varieties.

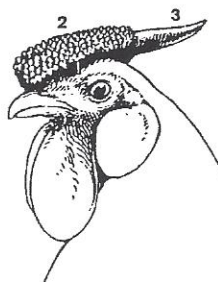


Figure 13  
Rose Comb  
1, Base; 2, Rounded Points;  
3, Spike.  
For ideal types see illustrations  
of breeds and varieties.

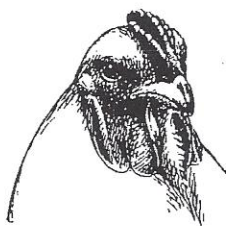


Figure 14  
Pea Comb  
For ideal types see illustrations  
of breeds and varieties.

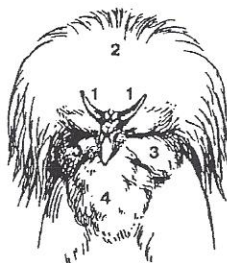


Figure 15  
Sultans Head, Male  
(Ideal)  
1-1, V-shaped Comb; 2,  
Crest; 3, Muffs;  
4, Beard.



Figure 16  
Cushion-Comb (Ideal)



Figure 17  
Buttercup Comb  
(Ideal)

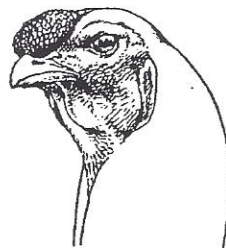


Figure 18  
Strawberry Comb  
(Ideal)

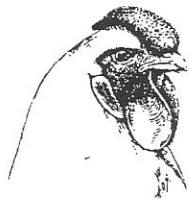


Figure 19  
Rose Comb  
Standard type as in  
Wyandotte males.



Figure 20  
Single Comb  
Front view, medium size, male  
comb. Showing strong base,  
firm and even position on head.

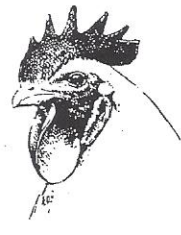


Figure 21  
Single Comb  
Standard type as in Plymouth  
Rock males.

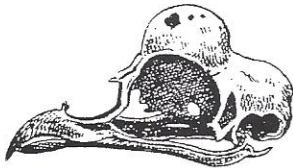


Figure 22  
Cross section of bony structure of  
head as in Polish, Houdan and  
Crevecoeur, showing beak, cavernous  
nostrils and knob.



Figure 23  
Undesirable Type of  
Single Comb.  
Head, narrow, shallow,  
over-refined.  
(Crow Head)

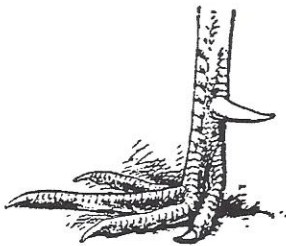


Figure 24  
Duck-Foot (A Disqualification)

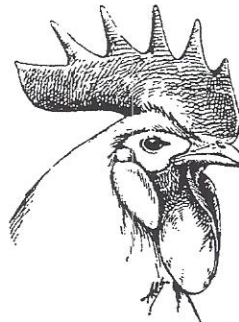


Figure 25  
Showing Face Section  
(Any positive enamel white  
in this section disqualifies  
Mediterranean cockerels  
and pullets except White  
Faced Black Spanish.)

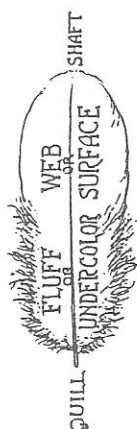


Figure 26  
Sections of  
a feather.



Figure 27  
Lopped Rose Comb  
(A Disqualification)



Figure 28  
Lopped Single Comb  
(A Disqualification)

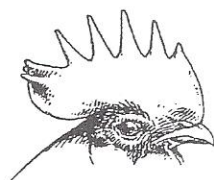


Figure 30  
One Form of Side Sprigs.  
(A Disqualification)

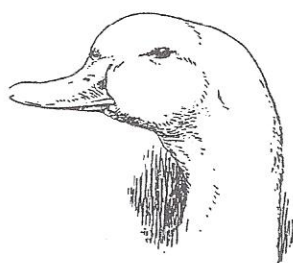


Figure 29  
Head of Duck Showing  
Scoop-Bill  
(A Disqualification)

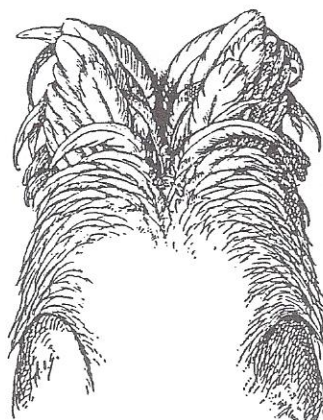


Figure 32  
Split Tail.  
Abnormal or sub-normal feather  
development.  
In young birds a defect — in old birds a  
disqualification.

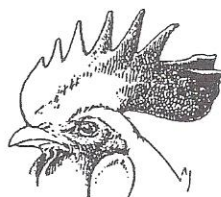


Figure 31  
Split Comb  
Showing the tendency of  
the blade to divide perpen-  
dicularly.  
(A Disqualification)





Figure 33  
Spilt Wing.  
(A Disqualification)

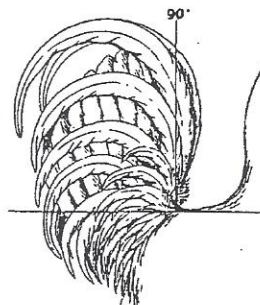


Figure 34  
Squirrel Tail.  
(A Disqualification except in  
Japanese Bantams)

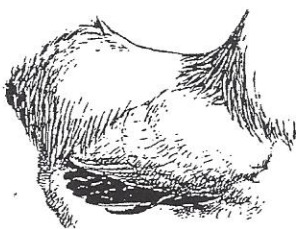


Figure 35  
Slipped Wing and Twisted Feather.  
(Disqualifications)



Figure 36  
Vulture Hocks  
(As shown, a Disqualification,  
except in Sultans and some  
breeds of feather legged Bantams.)

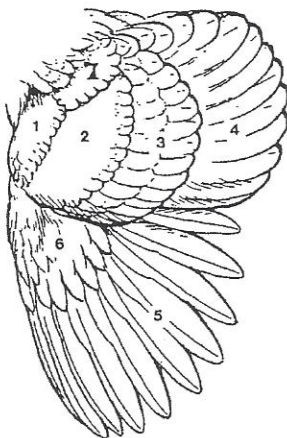


Figure 37  
Parts of Wing  
1, Front. 2, Bow. 3, Bar.  
4, Secondary. 5, Primaries.  
6, Primary Coverts.  
7, Wing Shoulder.

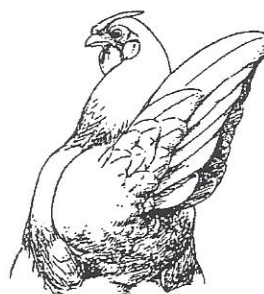


Figure 38  
Wry Tail.  
(A Disqualification)

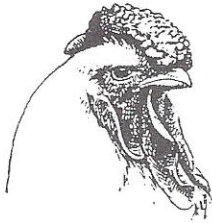


Figure 42

Comb, coarse; Wattles, coarse and wrinkled; Lobes, too loosely-fitted.



Figure 43

Thumb Marks in Comb, Rear Turning to One Side.  
(Defects.)

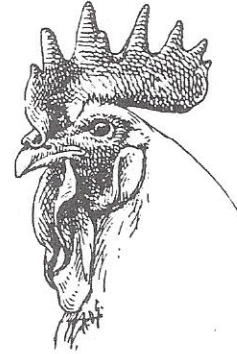


Figure 44

Faults of Head and Adjuncts:

Twisted Comb in front. Irreg. Serration of Comb. Coarse, Wrinkled Wattles. Loosely-Fitted Lobes.

#### DEFECTIVE FEATHER MARKINGS

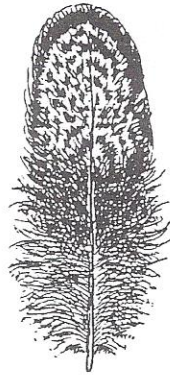


Figure 45

Mossy (Defective) Feather Occurs most often in Laced Varieties.

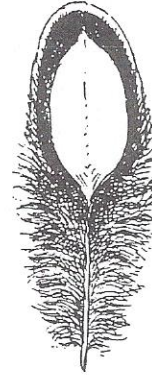


Figure 46

Frosting (A Defect). Faulty in Laced Varieties.

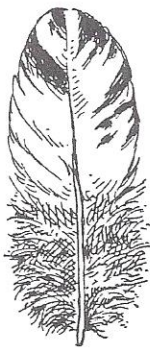


Figure 47

Splashed Feather. (A Defect.) Occurs in Spangled and Mottled Varieties.

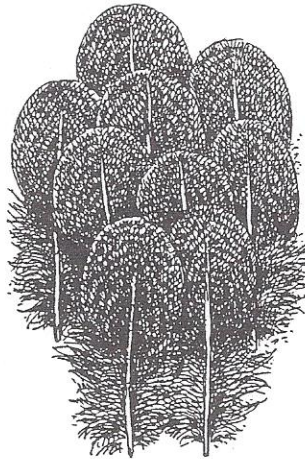


Figure 48

One Form of Shafting. (A Defect.) Occurs in Stippled Varieties.

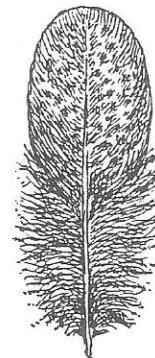


Figure 49

Mealy (Defective) Feather. Occurs in Red and Buff Varieties.



# DIFFERENT TYPES OF STANDARD FEATHER PATTERNS

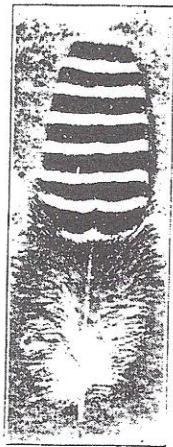


Figure 50  
A Penciled Feather.  
(Parallel Form.)  
Example: Silver Penciled  
Hamburgs.

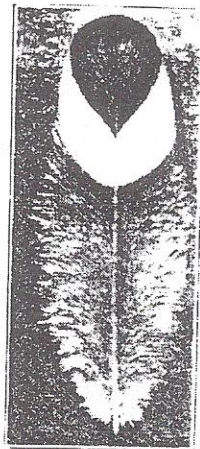


Figure 51  
A Spangled Feather.  
Example: Silver Spangled  
Hamburgs.

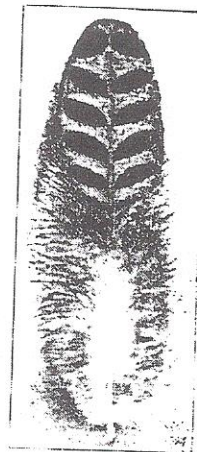


Figure 52  
A Feather with Elong-  
ated, Diagonal  
Spangles.  
(Buttercups.)

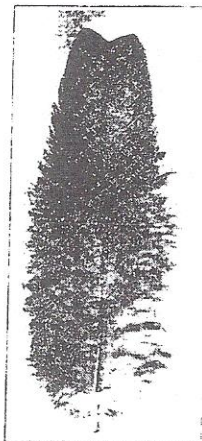


Figure 53  
A Mottled Feather.  
Example: Anconas

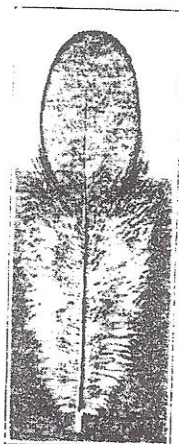


Figure 54  
Laced Feather.  
Examples:  
Blue Varieties

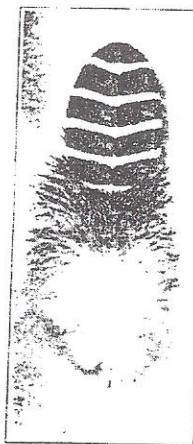


Figure 55  
Barring, Slightly  
V-shaped.  
Example: Silver  
Campines.

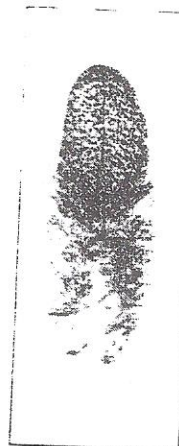


Figure 56  
A Stippled Feather.  
Example: Brown  
Leghorn females

DIFFERENT TYPES OF STANDARD FEATHER PATTERNS

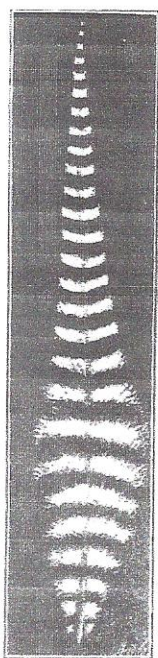


Figure 57  
Barring, at right  
angle with length  
of feather.  
Feather of Male.  
Example: Barred  
Plymouth Rocks.

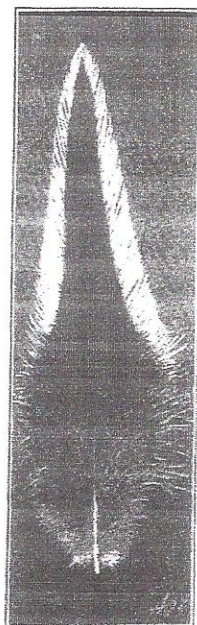


Figure 58  
A Striped Feather.  
Male Hackles.  
Silver Penciled  
Wyandottes.

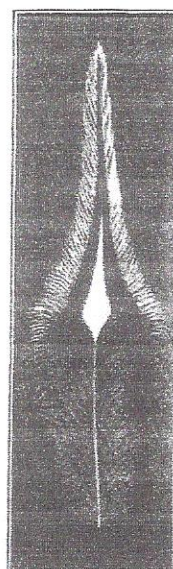


Figure 59  
A Striped Feather.  
with Diamond-  
Shaped Center.  
(Saddles of  
Silver Laced  
Wyandottes)

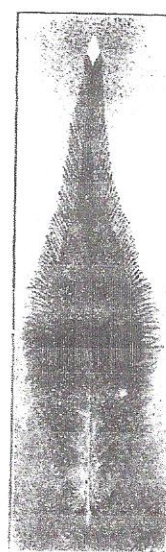


Figure 60  
A Feather Tipped  
with a Spangle.  
(Speckled Sussex)

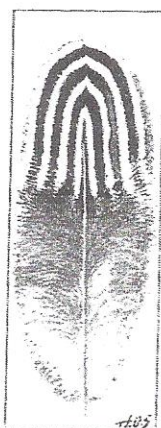


Figure 61  
A Penciled  
Feather.  
Example: Silver-  
Penciled Wyandottes.

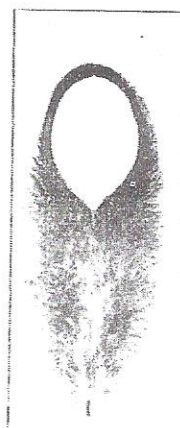


Figure 62  
Laced Feather  
(Silver)  
Examples:  
Silver-Laced  
Wyandottes.

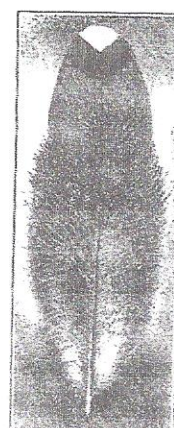
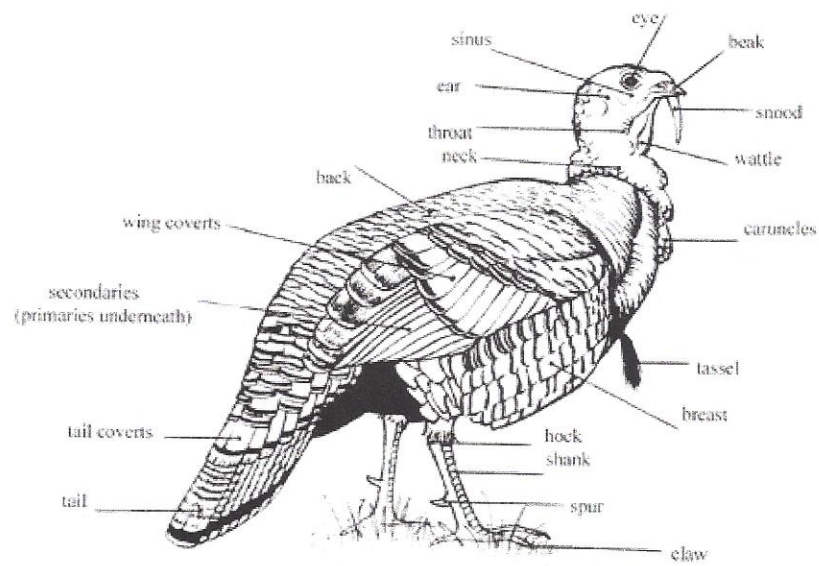
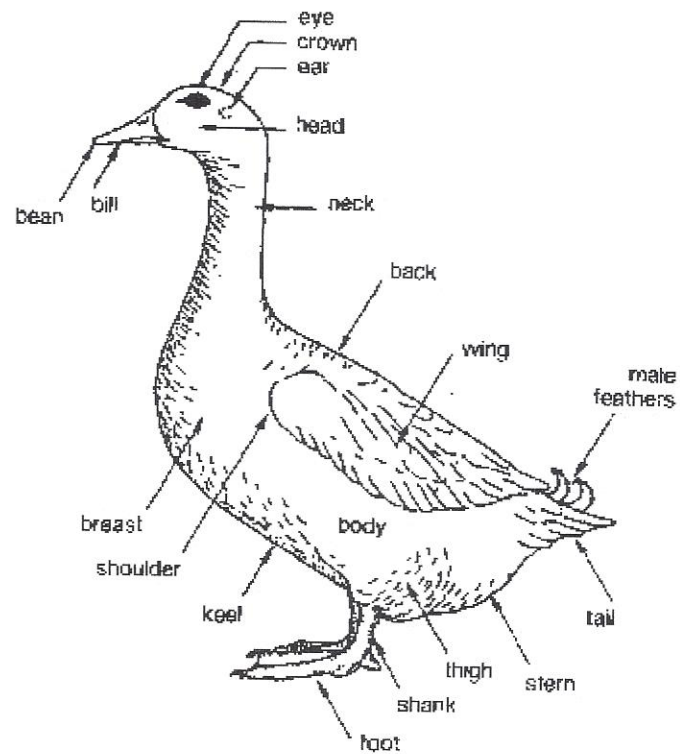


Figure 63  
Feather Tipped  
with Spangle.  
(Speckled Sussex)





## Large Breed Chicken Classes

### AMERICAN CLASS

Plymouth Rocks, Dominique's, Wyandotte's, Javas, Rhode Island Reds, Rhode Island Whites, Buckeyes, Chanteclers, Jersey Giants, Lamonas, New Hampshire's, Hollands and Delawares.

### ASIATIC CLASS

Cochins, Langshans, Brahmas

### ENGLISH CLASS

Dorkings, Redcaps, Cornish, Orpingtons, Sussex, Australorps

### MEDITERRANEAN CLASS

Leghorns, Minocras, Spanish, Andalusians, Ancona, Sicilian Buttercups, Catalanas

### CONTINENTAL CLASS

Hamburgs, Campines, Lakenvelders, Polish, Houdans, Crevecoeurs, La Fleche, Faverolles, Welsummers and Barnevelders

### ALL OTHER STANDARD BREEDS

Modern Game, Old English Games, Sumatras, Malays, Cubalayas, Phoenix, Yokohamas, Aseels, Shamos, Sultans, Frizzles, Naked Necks, Araucanas, Ameraucanas

## Bantams Breed Classes

### GAME BANTAMS

Modern Game and Old English Game

### SINGLE COMB CLEAN LEGGED BANTAMS

Anconas, Andalusians, Australorps, Campines, Catalanas, Delawares, Dorkings, Dutch, Frizzles, Hollands, Japanese, Javas, Jersey Giants, Lakenvelders, Lamonas, Leghorns, Minorcas, Naked Necks, New Hampshires, Orpingtons, Phoenix, Plymouth Rocks, Rhode Island Reds, Spanish, Sussex,

### ROSECOMB CLEAN LEGGED BANTAMS

Anconas, Antwerp Belgians {D'anvers} Dominiques, Dorkings, Hamburgs, Leghorns, Minorcas, Redcaps, Rhode Island Reds, Rhode Island Whites, Rosecombs, Sebrights, Wyandottes

### ALL OTHER CLEAN LEGGED BANTAMS

Ameraucana, Araucana, Buckeye, Chanteclers, Cornish, Crevecoeurs, Cubalayas, Houdans, La Fleche, Malays, Polish, Shamos, Sicilian Buttercups, Sumatras, Yokohamas

### FEATHERED LEGGED BANTAMS

Booted, Brahmas, Cochins, d'Uccle Faverolles, Frizzles, Langshans, Silkies, Sultans



## **Duck Classes**

### **HEAVY WEIGHT CLASS**

Pekin, Aylesbury, Rouen, Muscovy, Appleyard, Saxony

### **MEDIUM WEIGHT CLASS**

Cayuga, Crested, Swedish, Buff

### **LIGHT WEIGHT CLASS**

Runner, Campbell, Magpie, Welsh Harlequins,

### **BANTAM DUCK CLASS**

Call, East Indies, Mallards

## **Geese Classes**

### **HEAVY CLASS**

Toulouse, Embden, African

### **MEDIUM CLASS**

Sebastopol, Pilgrim, American Buff, Saddleback Pomeranian

### **LIGHT CLASS**

Chinese, Tufted Roman, Canada, Egyptian

## **Turkey Classes**

Bronze, Narragansett, White Holland, Black, Slate, Bourbon Red, Beltsville Small White,  
Royal Palm

Reprinted from the American Poultry Assn.



Wisconsin Department of Agriculture, Trade and Consumer Protection  
Division of Animal Health, Bureau of Animal Disease Control  
2811 Agriculture Drive, PO Box 8911, Madison, WI 53708-8911  
Phone: (608) 224-4872

# Wisconsin Individual Poultry Test Report (s. ATCP 10.40 (1) (d), Wis. Adm. Code)

Use this form for testing birds from flocks **not** in any of the following programs: Wisconsin Tested Flock, Wisconsin Associate Flock, NPIP, NPIP affiliate.

**Flock Owner Information:** (Individual or other legal entity – See instructions)

Individual's Name: Last First OR Name of Legal Entity:

Primary Contact for Flock:

Contact's Phone: 714-444-4444

Flock Owner's Address:

City

State

Zip Code

I understand that all sales must be reported on the Wisconsin Intrastate Sale of Poultry/Eggs (form #ah-poult-2740) to the WDATCP-DAH and a copy of this Wisconsin Poultry Individual Test Report must accompany the birds during movement, and must be given to each purchaser.

Flock Owner's Sig\_\_\_\_\_

Title: (if applicable)

**Flock Information:**

Address of premises where flock is kept:

City

State

Zip Code

Livestock Premises Code:

County:

Test Date:

List the following information for each bird tested:

[illegible]

**Tester Information:**

Tester's Name: \_\_\_\_\_

Tester's Number:

Antigen Lot #:

Antigen Expiration Date:	
--------------------------	--

Tester's Address:

City

State

Zip Code

**Tester's Signature**

Date \_\_\_\_\_

Personal information you provide may be used for purposes other than that for which it was originally collected (s. 15.04(1)(m)Wis. Stats.).

Distribution of this 3 ply form:

Original -- Mail to WDATCP-DAH

Pink – Flock Owner

Yellow - Tester



Sale	Re sale			
		Buyer		Price
<input type="checkbox"/> Rabbit	<input type="checkbox"/> Cavy	<input type="checkbox"/> Poultry	<input type="checkbox"/> Goat	

## Sheboygan County 4H & FFA Blue Ribbon Small Animal Auction

Exhibitor Name:	
Address:	
City, State, Zip:	
Phone:	
Parent's Name:	
Club:	
Email Address:	

I agree to write a thank you note within **two (2) weeks** after the fair. Mail original copy along with photo to the buyer and send a copy to the Blue Ribbon Committee Treasurer:

**Toni Kreif, N762 Allen Road, Random Lake, WI 53075**  
or email [tkreif@yahoo.com](mailto:tkreif@yahoo.com)

If no thank you note is received exhibitor will be barred from the sale the following year.

I have read and agreed to all the Blue Ribbon Small Animal Sale Rules as written in handbook.

Parent Signature

Exhibitor Signature

## Animal Purchase Contract

Buyer:	
Company:	
Address:	
City, State, Zip:	
Phone:	

I have purchased this animal and agree to pay for it in full at the time of sale. **Animals will be released to buyers at time of sale.**

Method of Payment (Office Use)

Buyer Signature



SHEBOYGAN COUNTY

## Blue Ribbon Small Animal Auction

---

5 University Drive - Sheboygan, WI 53081  
920-459-5903

### SALES AGREEMENT

I, and my parent/guardian, have read the rules for the Blue Ribbon Small Animal Auction. If I decide to enter an animal in the sale, I understand and agree to the said rules. I also understand the Blue Ribbon Small Animal Sale Committee has the right to make all final decisions.

This signed form must be returned **no later** than Wednesday, Fair entry day, to a superintendent.

Exhibitor Name: \_\_\_\_\_  
(Please Print)

Exhibitor Signature: \_\_\_\_\_

Parent/Guardian Signature: \_\_\_\_\_

Date: \_\_\_\_\_