



Human Development & Relationships (HDR)

Truong Tran, Human Development and Relationship Educator started October 28th.
Life Span, Family Engagement, and Relationships



Human Development & Relationship Educator
920-459-5906 ext 5006
ttran23@wisc.edu

- Conduct Community Needs Assessment to learn about the needs and opportunities in Sheboygan County.
 - Meet with Local organizations or community groups
- Provide Evidence-based programs

Planning AHEAD
Aging Mastery Program
Wise Wisconsin
Fatherhood Support Groups
Resilient Co-Parenting

Triple P Program
New Parent Just in Time Parenting
Literacy Link
Parent Forever for separating/divorcing parents

- Build capacity within the community to respond to issues facing older adults
- Work with local Organizations and Community Groups
- Educational Opportunities for HCE
- Parenting Education that supports positive parenting and family relationships, and family transitions
- Child Development and Parenting Supports
- Continuing Education for Early Care and Education Professionals



Truong Tran, Human Development and Relationships (HDR) Educator.

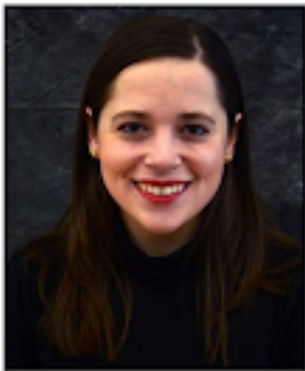
Truong started in his role on October 28th and brings to the position a Master of Science in Youth and Family Development, experience with Cooperative Extension- University of Florida, and skills in the development and direct delivery of educational programs.

The main area of work for the HDR educator focuses on Life Span, Family Engagement, and Relationships. As Truong starts in his role he will be reaching out to and meeting with local agencies and community partners. A few of the Local organizations or community groups that HDR educators have and will continue work with in Sheboygan County are the Community Partnership for Children, childcare providers, family caregiver coalition and support groups, the ADRC, and HCE.

Extension works to support and align programming with the local agencies to increase their capacity and strengthen their impact in Sheboygan County. HDR educators have a large network of professionals and experts within UW-Madison, Extension, and with state and national organizations to create evidence-based strategies and community engagement to address needs of the community.

Truong relocated with his family from Florida to Sheboygan County to accept this role. Truong is deeply committed to helping families thrive, supporting one another through the daily life challenges, and building strong, connected communities where everyone can feel supported and valued.

Outside of work, Truong enjoys spending time with his wife Abby and their two cats, and he loves hiking and scuba diving in his free time. He is excited to serve Sheboygan County and help families and communities thrive.



Community Development
Educator
Barbara Alvarez
920-459-5905
barbara.alvarez@wisc.edu

Community Development

Barbara Alvarez started in her role, as the Community development Educator on September 3rd.

Community Needs Assessment conducted to learn about the needs and opportunities in Sheboygan County.

In first 30 days

- Met with 17 Community Organizations
- Established meetings with 11 municipalities, met with 5, additional meetings scheduled after the election
- Attended the Wisconsin Towns Association (WTA) meeting
- Shared EMS Model Agreement and Property tax bill explanation example that may be beneficial to local government.

In first six months- Goals

- Meet with all 28 municipalities
- Continue to meet with organizations throughout the county
- Develop a communication strategy with these connections

Barbara has a PhD from the University of Wisconsin-Madison where she studied community-based research practices. She has over 13 years of professional community engagement experience.

Website Link to Local Government Extension: <https://localgovernment.extension.wisc.edu/>



Barbara Alvarez, Sheboygan County Community Development Educator.

Barbara Alvarez started in her role, as the Community development Educator on September 3rd. Barbara has a PhD from the University of Wisconsin-Madison where she studied community-based research practices. She has over 13 years of professional community engagement experience.

In her first 30 days, Barbara reached out to, and met with, or scheduled to meet with organizations and municipalities to start conducting a Community Needs Assessment. This information will help Barbara determine what resources, educational opportunities, and services she can provide throughout the county to municipalities, nonprofits, small businesses, and community organizations.

She attended the October Wisconsin Towns Association meeting and shared information about an EMS Model Agreement and Property tax bill explanation example that may be beneficial to local government. She emailed this information out to all 28 municipalities and will be presenting at the January WTA meeting. Barbara connected a Sheboygan County Supervisor requesting information on solar zoning language and legal challenges related to code based on an article they read, with the author of the article Bill Oemichen. Bill Oemichen is Extension's Local Government Education Program attorney that has been working on solar regulation issues in accordance with a U.S. Department of Energy grant. Bill Oemichen is in the process of developing a model on land use ordinances on renewable energy, like solar and wind. The model will help local elected officials define what towns can and cannot do related to renewable energy and understand the legality of solar zoning language.

Over the next six months, Barbara plans to meet with all 28 municipalities and continue to meet with organizations throughout the county. She is working to develop a communication strategy to share upcoming events, resources, and news with these connections.

Based on existing and immediate needs determined by meeting with municipalities and community organizations. This role can offer education, training, and support on a variety of topics.



4-H Program Educator
Sarah Feider
920-459-5918
sfeider@wisc.edu



Youth Development

4-H MEMBERS

2024 - 708 youth
2025 - 800 Projection

4-H VOLUNTEERS

2024 - 128 adults
2025 - 140 Projection

In School Programming

- Date Range 7/9-7/26
- Total Classrooms Visited: 14
- Total Number of Students: 99

Enchanted Forest/Open House

- Approximately 300 attendees
- 11 Clubs/Projects in attendance
- Outside Community Involvement:
 - Aurora
 - Coatsburg Library
 - Coatsburg Fire/Rescue
 - Sheboygan County Food Pantry
 - Sheboygan County Humane Society



Sarah Feider, Full- Time 4-H Program Educator in Sheboygan County.

Sarah Feider started in the role as the full time 4-H Program Educator on September 8th. Sarah brings to the position two decades of experience in education and has a master's degree in Adult and Continuing Education Leadership and a degree in Education, both from the University of Wisconsin-Milwaukee.

Previously, over the summer, Sarah was hired as Extension's .5 Positive Youth Development educator. In her part time role, Sarah reached out to area schools, visiting 14 classrooms and providing 99 youth with a hands-on learning program promoting what 4-H has to offer. Sarah is bringing that energy to her current role as the 4-H Educator. In her first 30 days, Sarah oversaw the annual financial reviews for all clubs and groups, held an open house and surpassed expectations for the Enchanted Forest. Over 500 attended, 300 were expected.

Currently Sheboygan has 708 4-H members. Sarah projects in 2025 that number will increase to 800. That is based on two new partnerships Sarah started with the Boys and Girls Club, Random Lake Middle School, and Change Academy to create in-school and after-school 4-H clubs.

AGRICULTURE



If it happens on a farm or in a field, the Extension Institute of Agriculture works with you to achieve better results. Our innovative dairy management programs range from genetics to farm and business management. Extension researchers work hand-in-hand with row crop, forage and fresh produce growers to provide best practices for every aspect of the growing phase. We also advise communities on using sustainable practices to create inviting spaces free from invasive species.

Crops

Liz Gartman, Regional Crops Educator

- A pest trapping network where I monitored traps during the growing season for economically important insect pests that can create issues in grain and forage crop production. This trapping network informs UW researchers and the Department of Agriculture, Trade and Consumer Protection so research and outreach can be crafted to assist producers in reacting to pest pressures and protecting their crops.
- Planning a session at the Wisconsin Water and Soil Health (WWASH) conference in collaboration with other Extension educators. The goal of the session is to provide insight into opportunities to include diverse cover crop species into dairy forage programs with the end result being additional cover crop acres incorporated into livestock production systems, resulting in improved soil health.
- An ongoing planning effort to prepare for the 2024 Badger Crops and Soils Update at three locations across Wisconsin and one virtual meeting by selecting meeting topics, recruiting speakers, and providing regional crops and soils information. This program is designed to share agronomic updates with sales agronomists and crop consultants to assist with recommendations to their growers to increase farm profitability and natural resource stewardship.

WELCOME! Manuel Peña – Regional Dairy Educator; Sheboygan, Fond Du Lac, Dodge, and Ozaukee

Manuel is the new Regional Dairy Educator for Sheboygan, Fond Du Lac, Dodge, and Ozaukee Counties. He is originally from Duitama, a small city in Colombia, 3 hours north of Bogotá, the capital city. He received his bachelor's degree in Animal Science at Universidad Nacional de Colombia. In the last semesters he worked for a national breeding association. After graduation he did an internship at NC State University working on Dairy management and another one at University of Florida working on forages and nutrition. Working at UF he linked with a Clemson's University professor who later would be his adviser on his master's and PhD degrees. His research has been focused on ruminal nutrition and forage management for the dairy industry. Manuel is looking forward to giving back to the community, helping as much as possible with their issues as much as to learn from their success and working together with other specialists.

In his free time, he enjoys outdoor activities and sports but also listening to music, reading and writing and even though he is not a great player he enjoys chess a lot.



FOOD SECURITY, HEALTHY EATING, AND HEALTHY LIVING



FoodWise advances healthy eating habits, active lifestyles and healthy community environments for families with limited incomes through nutrition education at the individual, community and systems levels. *FoodWise* reaches individuals and families through local community partners by providing nutrition classes in-person and virtually, indirect education (newsletters, etc.), and social media/marketing. *FoodWise* is an obesity prevention program that addresses policy, system and environmental changes through local and state public health efforts.

FoodWise is federally funded by the Supplemental Nutrition Assistance Program-Education (SNAP-Ed) and the Expanded Food and Nutrition Education Program (EFNEP).

Amanda Miller, FoodWise Coordinator

- Researching bike/walk to school efforts in Sheboygan County. The goal of this research is to help the SCAN (Sheboygan County Activity and Nutrition Coalition) coordinate and implement bike/walk to school programs with local schools/districts in the future.
- Attended the Fiesta Hispana event at South High School. At this event, *FoodWise* promoted healthy eating and trying new foods to Hispanic/Latinx high school students and families.
- Began a new partnership with Grant Elementary 2nd grade teachers to offer a series of eight Show Me Nutrition classes in three classrooms this school year with healthy foods samples. The purpose of these classes is to introduce the food groups and to encourage healthy eating at a young age.

Jayna Hintz
Area Extension Director

Liz Gartman
Regional Crops Educator

Manuel Peña
Regional Dairy Educator

Sarah Feider
4-H Youth Educator

Amanda Miller
FoodWise Coordinator

Janeth Orozco
FoodWise Educator

Barbara Alvarez
Community Development Educator

Truong Tran,
Human Development and Relationships Educator

Tammy Zorn
Support Staff

Emily Jensen
Support Staff

Cassi Worster
Area Marketing Specialist